

**ALLENBY HOUSE SOUTH, LANSDOWN ROAD, BA1 5RE**  
£3,500 per month\*

**Carter Jonas**



---

## A most wonderful Ground Floor Garden apartment in a period residence on the lower Lansdown slopes with 3 bedrooms, 2 bathrooms and an off-street parking space.

- Open plan Kitchen/dining/living room
- 3 double bedrooms
- 2 bathrooms
- Rear courtyard
- Communal Garden
- Off-street parking space

### THE PROPERTY

A most handsome apartment situated on the ground floor of an impressive Victorian Villa set back off Lansdown Road in a leafy area and enjoying a sunny east west aspect. Having been the subject of complete renovation in recent years, this ground floor apartment has a light and spacious open-plan kitchen/dining/living room space with double doors out on to a rear terrace. There are 3 double bedrooms, 2 bathrooms (one en-suite) and an allocated off-street parking space (which could fit two cars parking in tandem), in addition to on-street parking which is zone free. In addition to being an easy walk in to the City Centre, there is also the park and ride bus stop right outside.

The smart west facing private terrace is accessed via the sitting room and this terrace opens up onto a large communal garden which is shared with the other residents (6 apartments in total). The garden and communal areas are beautifully maintained. This really is a wonderful garden apartment in a prime Bath location. Available early April 2025. Holding deposit of one week's rent = £807.69 (deducted from first month's rent ) 5 weeks' rent deposit = £4038.46 Available for an initial 12 month tenancy.

EPC Rating D. Council Tax Band E (please see Bath & North East Somerset website for current cost)

Mains electric, gas and metered mains water.

Parking: For two small cars in tandem outside the apartment and zone free on street parking.

Internet & Mobile: Further information on availability and speeds can be found on the Ofcom website.





## OUTSIDE

The apartment enjoys a private west facing terrace that is open onto the communal garden area.

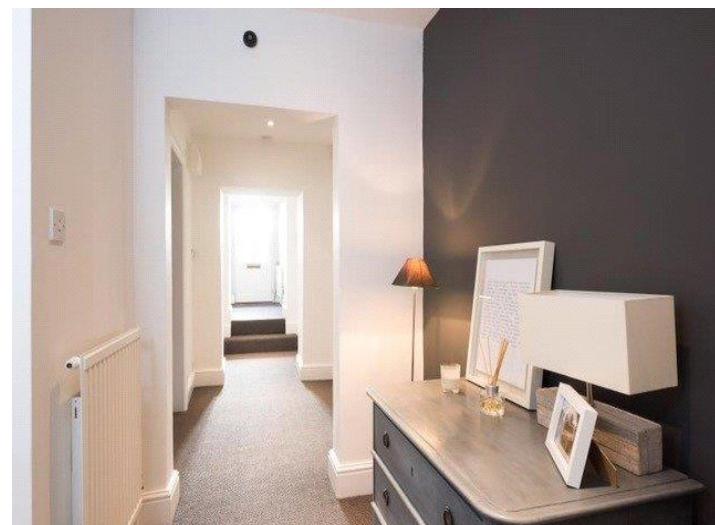
## ADDITIONAL INFORMATION

Offers	Available for a minimum term of 12 months longer terms will be considered
--------	---------------------------------------------------------------------------

Viewing	Strictly by appointment
---------	-------------------------

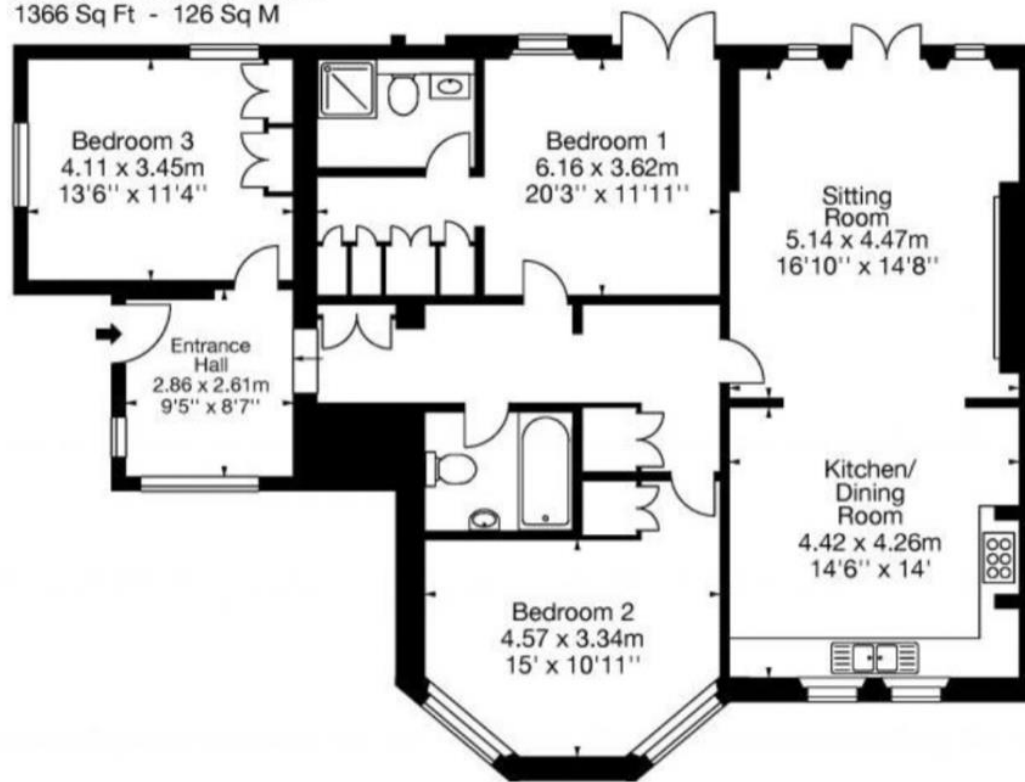
Local Authority	Bath and North East Somerset, Bath - Council Tax Band E
-----------------	---------------------------------------------------------

Directions	
------------	--





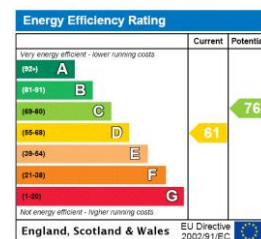
Allenby House,  
Bath, BA1 5RE  
Approx. Gross Internal Area  
1366 Sq Ft - 126 Sq M



Ground Floor



©2019 Capture Property Marketing Ltd. Design to fit 28 guidelines.  
All measurements are approximate and do not represent an independent valuer.  
Please see the full brochure for more details. Not subject to audit.



T: 01225 747250

5-6 Wood Street, Bath, Somerset, BA1 2JQ

E: bath@carterjonas.co.uk

A member of



Exclusive UK affiliate of

CHRISTIE'S  
INTERNATIONAL REAL ESTATE

Classification L2 - Business Data

## IMPORTANT INFORMATION

These particulars are for general information purposes only and do not represent an offer or contract or part of one. Carter Jonas or anyone in their employment has made every attempt to ensure that the particulars and other information provided are as accurate as possible and they are not intended to amount to advice on which you should rely as being factually accurate. Full information which may be relevant to your decision regarding the property can be found on the property listing on [carterjonas.co.uk](http://carterjonas.co.uk) or a separately available material information sheet, and we would advise you to confirm the details of any material information prior to any offer being submitted. You should not assume that the property has all necessary planning, building regulations or other consents and Carter Jonas has not tested any services, facilities, or equipment. Any measurements and distances given are approximate only. Where Carter Jonas has been provided with a floorplan by a third party, we cannot guarantee that the floorplan has been measured in accordance with IPMS. Purchasers or prospective tenants must satisfy themselves of all of the aforementioned by independent inspection or otherwise. Our images only represent part of the property as it appeared at the time they were taken and do not represent the furnishings included; these are confirmed in a separate inventory. If you require further information, please contact us. \*Administration fees may apply depending on tenancy type. Please contact your local branch for this information.