



**TUNLEY, BATH, BA2 0DZ**  
£1,950 per month\*

**Carter Jonas**



---

## A 3 bedroom , recently renovated, home in the village of Tunley, some 5 miles south of Bath with a south facing garden.

- Kitchen/breakfast room
- Living Room
- 3 Bedrooms
- Bathroom
- Rear enclosed garden
- Two off street parking spaces
- Recently refurbished
- Great views

### THE PROPERTY

We are pleased to offer to the rentals market a 3 bedroom, bay fronted period home in the village of Tunley, 5 miles to the south of Bath City centre. The property has been the subject of complete renovation and modernisation within the past 2 years and offers the immaculate accommodation of living room with bay window, kitchen/breakfast room with all appliances and central breakfast bar island. French doors lead from the kitchen to the south facing terrace and garden. There is also a cloakroom on the ground floor off the kitchen. Stairs rise to the first floor where there are two double bedrooms and a bathroom having bath and separate shower. Up again to the second floor where you will find the third double bedroom, having wonderful views across the garden to the fields beyond. This is a wonderful home suitable for a professional couple or family.

Available for an initial 12 month tenancy.

EPC Rating C. Council Tax Band C (please see Bath & North East Somerset website for current cost)

Mains electric, oil central heating and mains water. Parking for two vehicles just to the front of the property, off street with an electric car charging point. Internet & Mobile: Further information on availability and speeds can be found on the Ofcom website. Garden approached by a shared access path that leads to the gate in the rear garden. At a rent of £2000 per calendar month: Holding deposit





of 1 week's rent £461.53 (deducted from first month's rent) Security deposit of 5 weeks rent £2,307.69

**OUTSIDE**

**Rear south facing terrace and enclosed garden and parking for two cars to the front.**

**ADDITIONAL INFORMATION**

Offers	Available for a minimum term of 12 months longer terms will be considered
Viewing	Strictly by appointment
Local Authority	- Council Tax Band C
Directions	



## Coronation Villas, Tunley, Bath, BA2

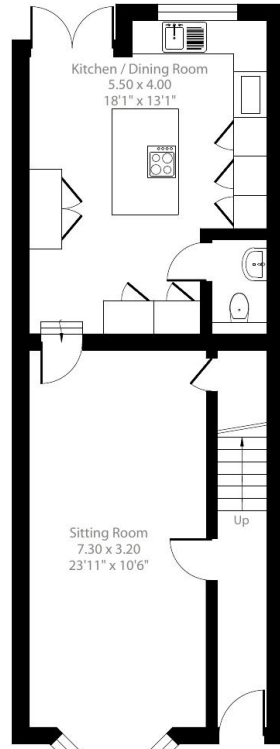
Approximate Area = 1120 sq ft / 104 sq m

Limited Use Area(s) = 47 sq ft / 4.3 sq m

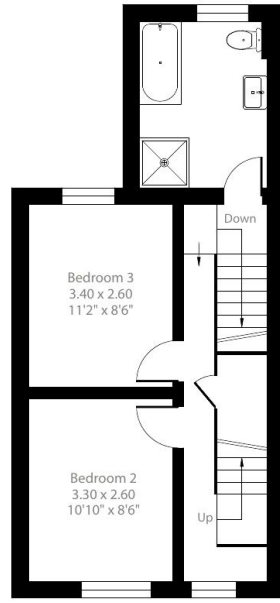
Total = 1167 sq ft / 108.3 sq m

For identification only - Not to scale

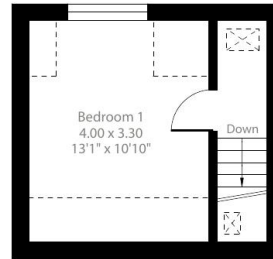
Denotes restricted  
head height



Ground Floor



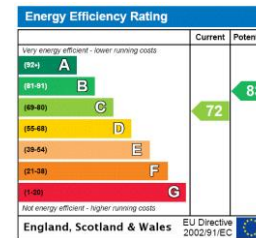
First Floor



Second Floor



Floor plan produced in accordance with RICS Property Measurement 2nd Edition, Incorporating International Property Measurement Standards (IPMS2 Residential). © nchecon 2024. Produced for Carter Jonas. REF: 1206907



T: 01225 747250

5-6 Wood Street, Bath, Somerset, BA1 2JQ

E: bath@carterjonas.co.uk

A member of



Exclusive UK affiliate of

**CHRISTIE'S**  
INTERNATIONAL REAL ESTATE

Classification L2 - Business Data

### IMPORTANT INFORMATION

These particulars are for general information purposes only and do not represent an offer or contract or part of one. Carter Jonas or anyone in their employment has made every attempt to ensure that the particulars and other information provided are as accurate as possible and they are not intended to amount to advice on which you should rely as being factually accurate. Full information which may be relevant to your decision regarding the property can be found on the property listing on [carterjonas.co.uk](http://carterjonas.co.uk) or a separately available material information sheet, and we would advise you to confirm the details of any material information prior to any offer being submitted. You should not assume that the property has all necessary planning, building regulations or other consents and Carter Jonas has not tested any services, facilities, or equipment. Any measurements and distances given are approximate only. Where Carter Jonas has been provided with a floorplan by a third party, we cannot guarantee that the floorplan has been measured in accordance with IPMS. Purchasers or prospective tenants must satisfy themselves of all of the aforementioned by independent inspection or otherwise. Our images only represent part of the property as it appeared at the time they were taken and do not represent the furnishings included; these are confirmed in a separate inventory. If you require further information, please contact us. \*Administration fees may apply depending on tenancy type. Please contact your local branch for this information.