



Flat 5, ALFRED STREET, BATH, BA1 2QX
£1,500 per month*

Carter Jonas

A large, light and bright second floor one bedroom apartment in a Georgian Townhouse, in an extremely central location with views across to the Assembly rooms.

- Living Room
- Bedroom
- Kitchen
- Bathroom

THE PROPERTY

Alfred Street is situated in a prime residential location in the heart of the city opposite the Assembly Rooms and near to the Circus and Royal Crescent. It is a short walk from all the amenities that Bath City Centre has to offer. Being on the second floor of a Georgian Grade II Listed Townhouse, this apartment enjoys lovely city views and the well proportioned accommodation offers, entrance hall leading into a light and airy living room (15' x 15') which in turn leads through to the kitchen/breakfast room. The bedroom is accessed from a door in the Sitting Room and overlooks the Assembly Rooms. It is 17' x 15' and has two built in storage cupboards and the bathroom is en-suite to the bedroom with shower over bath. This is a really wonderful one bedroom city centre apartment. Gas CH. Available for an initial 12 month tenancy.

EPC Rating C. Council Tax Band C (please see Bath & North East Somerset website for current cost)

Mains electric, gas and mains water.

Parking: On street parking permit available for one car. Internet & Mobile: Further information on availability and speeds can be found on the Ofcom website.

At a rent of £1500 per calendar month: Holding deposit of 1 week's rent £346.15 (to be deducted from first month's rent) Security deposit of 5 weeks rent £1,730.76



ADDITIONAL INFORMATION

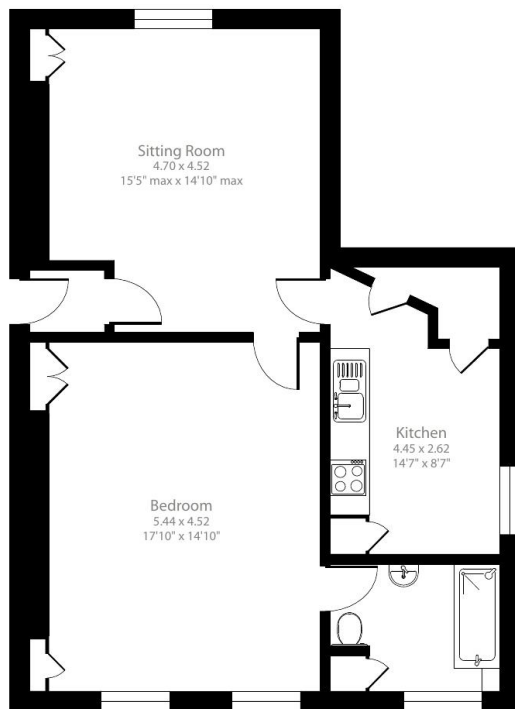
Offers	Available for a minimum term of 12 months longer terms will be considered
--------	---

Viewing	Strictly by appointment
---------	-------------------------

Local Authority	- Council Tax Band C
-----------------	----------------------

Directions	
------------	--





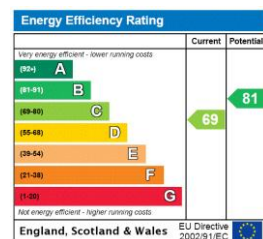
Second Floor

Floor plan produced in accordance with RICS Property Measurement 2nd Edition, Incorporating International Property Measurement Standards (IPMS2 Residential). © nichecom 2024. Produced for Carter Jonas. REF: 1221197

Alfred Street, Bath, BA1

Approximate Area = 700 sq ft / 65 sq m

For identification only - Not to scale



T: 01225 747250

5-6 Wood Street, Bath, Somerset, BA1 2JQ

E: bath@carterjonas.co.uk



Exclusive UK affiliate of

CHRISTIE'S
INTERNATIONAL REAL ESTATE

Classification L2 - Business Data

IMPORTANT INFORMATION

These particulars are for general information purposes only and do not represent an offer or contract or part of one. Carter Jonas or anyone in their employment has made every attempt to ensure that the particulars and other information provided are as accurate as possible and they are not intended to amount to advice on which you should rely as being factually accurate. Full information which may be relevant to your decision regarding the property can be found on the property listing on carterjonas.co.uk or a separately available material information sheet, and we would advise you to confirm the details of any material information prior to any offer being submitted. You should not assume that the property has all necessary planning, building regulations or other consents and Carter Jonas has not tested any services, facilities, or equipment. Any measurements and distances given are approximate only. Where Carter Jonas has been provided with a floorplan by a third party, we cannot guarantee that the floorplan has been measured in accordance with IPMS. Purchasers or prospective tenants must satisfy themselves of all of the aforementioned by independent inspection or otherwise. Our images only represent part of the property as it appeared at the time they were taken and do not represent the furnishings included; these are confirmed in a separate inventory. If you require further information, please contact us. *Administration fees may apply depending on tenancy type. Please contact your local branch for this information.