



BROCK STREET, BATH, BA1 2LW
£1,850 per month*

Carter Jonas

A most wonderfully light and bright two bedroom first floor apartment situated over two floors of a Georgian Townhouse on the corner of Brock Street having lovely views of Royal Victoria Park.

- Living Room
- Kitchen
- Two Bedrooms
- Bathroom

THE PROPERTY

A wonderful light and bright first floor apartment situated on the corner of Brock Street and Upper Church Street. The accommodation is set over two floors and comprises an entrance hall leading through to a 21 ft living room with large sash windows having views across to Royal Crescent and Royal Victoria Park and comprising furniture of table and chairs, sofa, bookcase and wall mounted TV. A door leads through to the kitchen which has appliances of oven and hob, dishwasher, washing machine and fridge/freezer. There is a tumble dryer situated in a cupboard on this floor.

Stairs rise to the next floor where there are two double bedrooms, one having double bed and a large smart bathroom with shower over bath.

This really is a very smart flat in a most sought after location and would suit either a professional single or couple. Regret no sharers. Everything that Bath has to offer is on the doorstep, Royal Victoria Park, the local shops at Margarets Buildings, the Circus in addition to the city centre which is a beautiful 5 minute walk through the park. Available from 1st May. Offered unfurnished or part furnished. EPC Band D, Council Tax Band D.

At a rent of £1850 per month: Holding deposit of one week's rent (deducted from first month's rent) = £426.92

Five weeks' rent = £2134.60



ADDITIONAL INFORMATION

Offers	Available for a minimum term of 12 months longer terms will be considered
--------	---

Viewing	Strictly by appointment
---------	-------------------------

Local Authority	- Council Tax Band D
-----------------	----------------------

Directions	
------------	--

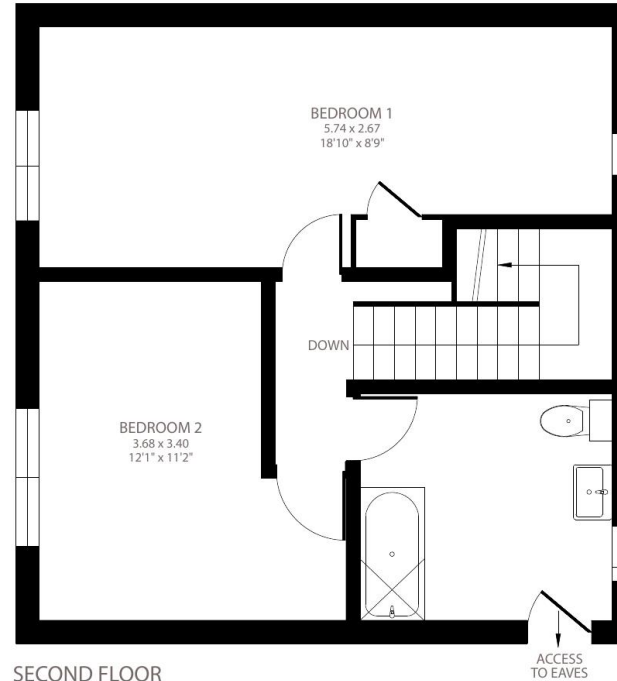
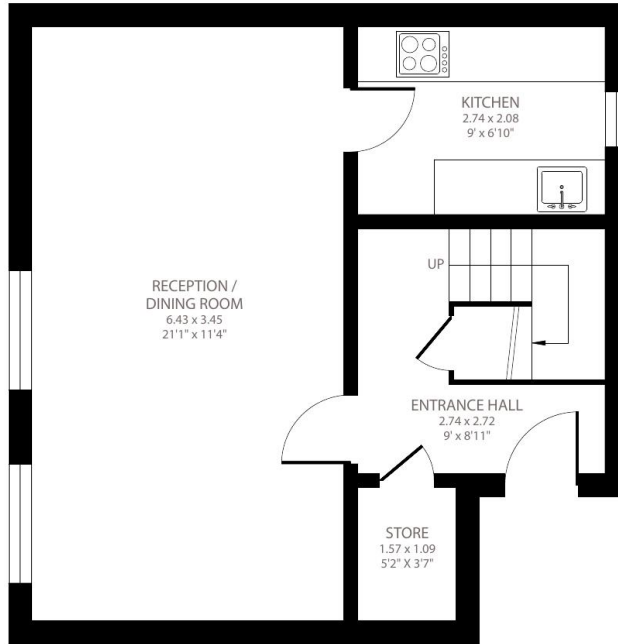




Brock Street, Bath, BA1

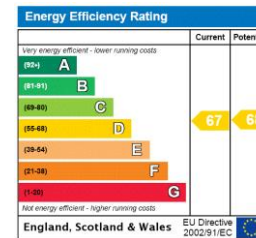
Approximate Area = 873 sq ft / 81 sq m

For identification only - Not to scale



Certified
Property
Measurer

Floor plan produced in accordance with RICS Property Measurement Standards incorporating International Property Measurement Standards (IPMS2 Residential). © nlcocom 2023. Produced for Carter Jonas. REF: 957522



T: 01225 747250

5-6 Wood Street, Bath, Somerset, BA1 2JQ

E: bath@carterjonas.co.uk

A member of



Exclusive UK affiliate of

CHRISTIE'S
INTERNATIONAL REAL ESTATE

Classification L2 - Business Data

IMPORTANT INFORMATION

These particulars are for general information purposes only and do not represent an offer or contract or part of one. Carter Jonas or anyone in their employment has made every attempt to ensure that the particulars and other information provided are as accurate as possible and they are not intended to amount to advice on which you should rely as being factually accurate. Full information which may be relevant to your decision regarding the property can be found on the property listing on carterjonas.co.uk or a separately available material information sheet, and we would advise you to confirm the details of any material information prior to any offer being submitted. You should not assume that the property has all necessary planning, building regulations or other consents and Carter Jonas has not tested any services, facilities, or equipment. Any measurements and distances given are approximate only. Where Carter Jonas has been provided with a floorplan by a third party, we cannot guarantee that the floorplan has been measured in accordance with IPMS. Purchasers or prospective tenants must satisfy themselves of all of the aforementioned by independent inspection or otherwise. Our images only represent part of the property as it appeared at the time they were taken and do not represent the furnishings included; these are confirmed in a separate inventory. If you require further information, please contact us. *Administration fees may apply depending on tenancy type. Please contact your local branch for this information.