



WARWICK WAY, PIMLICO, SW1V
£645,000

Carter Jonas

WARWICK WAY, PIMLICO, SW1V

Brand new to the market and available to view now. A two bedroom, two bathroom lower ground floor flat that would make a super central London base in the heart of Pimlico. EPC rating: D

This residential period conversion is situated on the western end of Warwick Way, a short walk away from the extensive local amenities of Pimlico as well as easy access to Belgravia and Victoria.

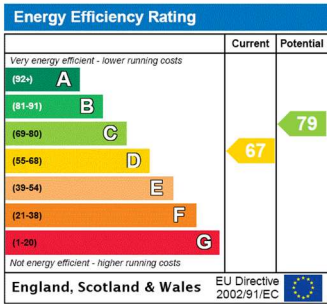
Reception, kitchen, 2 bedrooms, bathroom, shower room.

Leasehold: c.139 years remaining
Service charge: waiting for current information from managing agent
Ground rent: Peppercorn

Westminster City Council
Council tax band: E

For the latest information on broadband and mobile coverage, please visit the Ofcom website <https://checker.ofcom.org.uk/en-gb/broadband-coverage> for the most up-to-date details.

For eligibility for resident parking permits, please refer to the Westminster council website <https://www.westminster.gov.uk/parking> for further details.



TENURE Leasehold

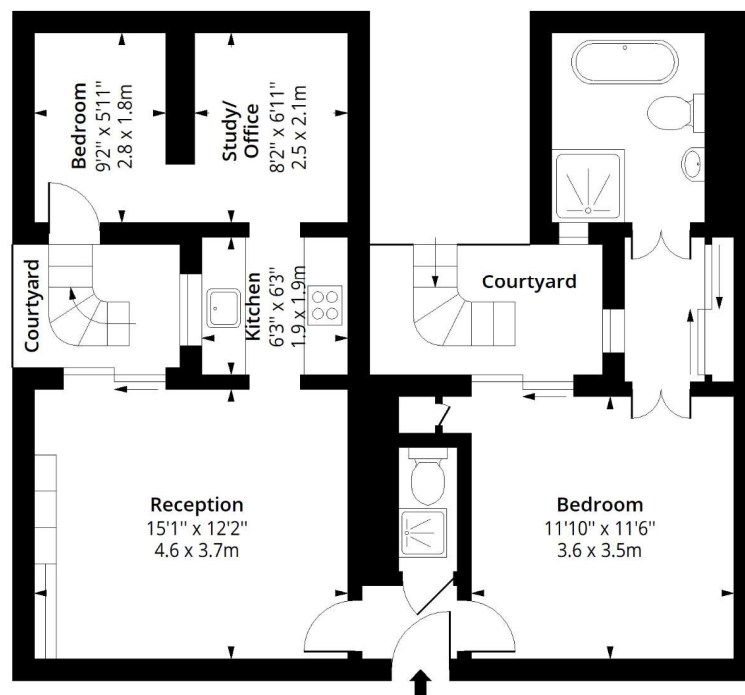
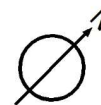
LOCAL AUTHORITY Westminster City Council

EPC BAND D



Warwick Way, SW1V

Approx. Gross Internal Area 643 Sq Ft - 59.73 Sq M
Approx. Gross Courtyard Area 104 Sq Ft - 9.66 Sq M



Lower Ground Floor

Floor Area 643 Sq Ft - 59.73 Sq M



Measured according to RICS IPMS2. Floor plan is for illustrative purposes only and is not to scale. Every attempt has been made to ensure the accuracy of the floor plan shown, however all measurements, fixtures, fittings and data shown are an approximate interpretation for illustrative purposes only. 1 sq m = 10.76 sq feet.

lpaplus.com

Date: 29/10/2024

Kensington & Chelsea 020 7584 7020

chelsea@carterjonas.co.uk
25-27 Harrington Road, London, SW7 3EU

carterjonas.co.uk
Offices throughout the UK

Exclusive UK affiliate of

CHRISTIE'S
INTERNATIONAL REAL ESTATE

IMPORTANT INFORMATION

These particulars are for general information purposes only and do not represent an offer or contract or part of one. Carter Jonas or anyone in their employment has made every attempt to ensure that the particulars and other information provided are as accurate as possible and they are not intended to amount to advice on which you should rely as being factually accurate. Full information which may be relevant to your decision regarding the property can be found on the property listing on carterjonas.co.uk or, (including off market properties) on the brochure or a separately available material information sheet. We would advise you to confirm the details of any material information prior to any offer being submitted. You should not assume that the property has all necessary planning, building regulations or other consents and Carter Jonas has not tested any services, facilities or equipment. Any measurements and distances given are approximate only. Where Carter Jonas has been provided with a floorplan by a third party, we cannot guarantee that the floorplan has been measured in accordance with IPMS. Purchasers must satisfy themselves of all of the aforementioned by independent inspection or otherwise. Our images only represent part of the property as it appeared at the time they were taken and do not represent the furnishings included; these are confirmed in a separate inventory. If you require further information, please contact us.

Classification L2 - Business Data