



EGERTON GARDENS, KNIGHTSBRIDGE, SW3
£1,100 per week*

Carter Jonas

EGERTON GARDENS, KNIGHTSBRIDGE, SW3

A brand newly refurbished two bedroom flat situated on the second floor of this period redbrick building on the Knightsbridge/Chelsea borders. EPC rating: C

Egerton Gardens is ideally positioned for easy access to the diverse and exclusive boutiques, restaurants, world class museums and of course Harrods and Harvey Nicholls.

Reception/dining room, kitchen, 2 bedrooms, bathroom, cloakroom. Unfurnished.

Holding deposit is 1 week's rent

Security deposit is 6 week's rent

Minimum term is 12 months

Royal Borough of Kensington & Chelsea

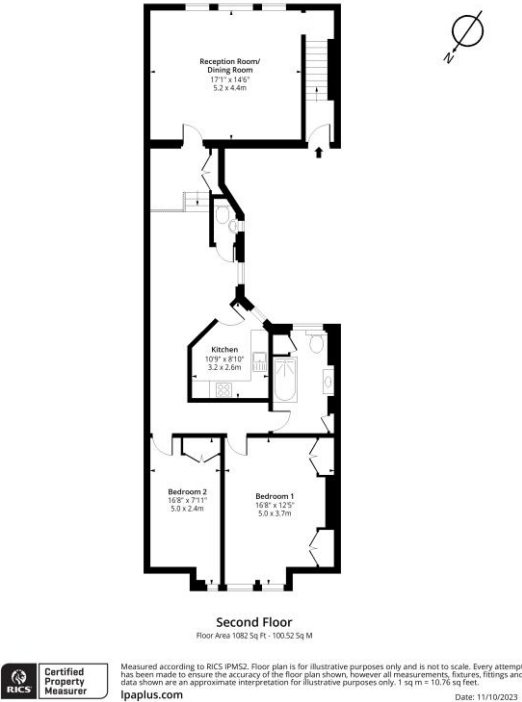
Council tax band: G

- Council Tax Band •
= G
- Deposit Required
= £6,000.00
- Long Let
- EPC = C

Energy Efficiency Rating		
	Current	Potential
Very energy efficient - lower running costs		
(92-100) A		
(81-91) B		
(69-80) C		
(55-68) D		
(39-54) E		
(21-38) F		
(1-20) G		
Not energy efficient - higher running costs		
England, Scotland & Wales	EU Directive 2002/91/EC	

Egerton Gardens, SW3

Approx. Gross Internal Area 1082 Sq Ft - 100.52 Sq M



South Kensington & Knightsbridge Letting 020 7584 7020

chelsea@carterjonas.co.uk

25-27 Harrington Road, London, SW7 3EU



Exclusive UK affiliate of

CHRISTIE'S
INTERNATIONAL REAL ESTATE

Classification L2 - Business Data

IMPORTANT INFORMATION

These particulars are for general information purposes only and do not represent an offer of contract or part of one. Carter Jonas has made every attempt to ensure that the particulars and other information provided are as accurate as possible and are not intended to amount to advice on which you should rely as being factually accurate. You should not assume that the property has all necessary planning, building regulations or other consents and Carter Jonas have not tested any services, facilities or equipment. Any measurements and distances given are approximate only. Where Carter Jonas have been provided with a floorplan by a third party, we can not guarantee that the floorplan has been measured in accordance with IPMS. Purchasers or prospective tenants must satisfy themselves of all of the aforementioned by independent inspection or otherwise. Although we make reasonable efforts to update our information, neither Carter Jonas nor anyone in its employment or acting on its behalf makes any representations warranties or guarantees, whether express or implied, in relation to the property, or that the content in these particulars is accurate, complete or up to date. Our images only represent part of the property as it appeared at the time they were taken and do not represent the furnishings included, these are confirmed in a separate inventory. If you require further information please contact us.

* Administration fees may apply depending on tenancy type. Please contact your local branch for this information.