



**STANHOPE GARDENS, SOUTH KENSINGTON, SW7**  
Offers in excess of £850,000

**Carter Jonas**

# STANHOPE GARDENS, SW7

A bright and nicely presented two bedroom flat on the fourth floor (entrance on third floor) of this stucco-fronted period building moments from Gloucester Road. EPC rating: D

Stanhope Gardens is in the heart of South Kensington with access to many local amenities as well as easy access around central London and beyond.

Reception fully fitted kitchen, 2 bedrooms, shower room. n.b. there is no lift in this building. Access to communal gardens.

Leasehold: 109 years left (155 years from 25 March 1979)  
Service Charge: approx. £2,900 per year  
Building Insurance/Sinking Fund: approx. £400 per year  
Ground Rent: £300 per year

Royal Borough of Kensington & Chelsea  
Council tax band: G

For the latest information on broadband and mobile coverage, please visit the Ofcom website <https://checker.ofcom.org.uk/en-gb/broadband-coverage>.

For eligibility for resident parking permits, please refer to the RBKC website <https://www.rbkc.gov.uk/parking-transport-and-streets/visitor-parking-and-pay-phone/guide-parking> for further details.

Energy Efficiency Rating		
	Current	Potential
Very energy efficient - lower running costs		
(92+) A		
(81-91) B		
(69-80) C		
(55-68) D	63	67
(39-54) E		
(21-38) F		
(1-20) G		
Not energy efficient - higher running costs		
England, Scotland & Wales	EU Directive 2002/91/EC	

## AMENITIES

- 2 Bedrooms
  - Shower room
  - Access to communal gardens
- Gloucester Road underground (Circle, District & Piccadilly lines)
  - Good rental investment

TENURE Leasehold

LOCAL AUTHORITY RBKC

EPC BAND D

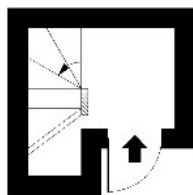






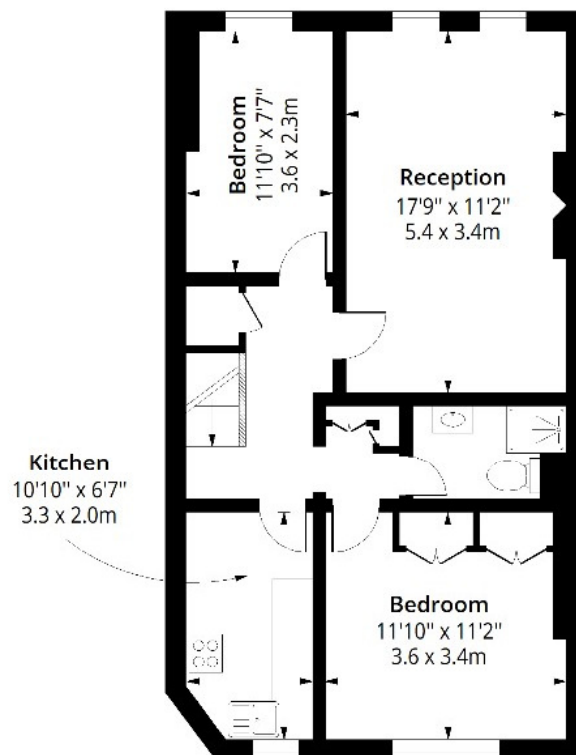
# Stanhope Gardens, SW7

Approx. Gross Internal Area 718 Sq Ft - 66.70 Sq M



## Third Floor

Floor Area 44 Sq Ft - 4.09 Sq M



## Fourth Floor

Floor Area 674 Sq Ft - 62.61 Sq M



Measured according to RICS IPMS2. Floor plan is for illustrative purposes only and is not to scale. Every attempt has been made to ensure the accuracy of the floor plan shown, however all measurements, fixtures, fittings and data shown are an approximate interpretation for illustrative purposes only. 1 sq m = 10.76 sq feet.

lpaplus.com

Date: 7/2/2025

**Kensington & Chelsea 020 7584 7020**

chelsea@carterjonas.co.uk  
25-27 Harrington Road, London, SW7 3EU

**carterjonas.co.uk**  
Offices throughout the UK

*Exclusive UK affiliate of*

**CHRISTIE'S**  
INTERNATIONAL REAL ESTATE

### IMPORTANT INFORMATION

These particulars are for general information purposes only and do not represent an offer or contract or part of one. Carter Jonas or anyone in their employment has made every attempt to ensure that the particulars and other information provided are as accurate as possible and they are not intended to amount to advice on which you should rely as being factually accurate. Full information which may be relevant to your decision regarding the property can be found on the property listing on carterjonas.co.uk or, (including off market properties) on the brochure or a separately available material information sheet. We would advise you to confirm the details of any material information prior to any offer being submitted. You should not assume that the property has all necessary planning, building regulations or other consents and Carter Jonas has not tested any services, facilities or equipment. Any measurements and distances given are approximate only. Where Carter Jonas has been provided with a floorplan by a third party, we cannot guarantee that the floorplan has been measured in accordance with IPMS. Purchasers must satisfy themselves of all of the aforementioned by independent inspection or otherwise. Our images only represent part of the property as it appeared at the time they were taken and do not represent the furnishings included; these are confirmed in a separate inventory. If you require further information, please contact us.

Classification L2 - Business Data