



**GROSVENOR SQUARE, MAYFAIR, W1K**  
£4,000 per week\*

**Carter Jonas**



---

# FLAT 14, GROSVENOR SQUARE, MAYFAIR, LONDON, W1K 2HS

A three-bedroom apartment of approximately 2,013 square feet

- Unfurnished
- 3 Bedrooms
- 3 Bathrooms
- Reception room
- Kitchen

## THE PROPERTY

This beautiful lateral apartment is situated on the sixth floor of a prestigious residential building centrally located in the heart of Mayfair.

This bright apartment has the benefit of 24-hour concierge, air conditioning and views over Grosvenor Square

## LOCATION

Mayfair is London's most fashionable destination. With London's finest buildings, largest concentration of luxury hotels, best restaurants, bars, shopping, open spaces and hidden treasures all nestled together in a beautiful village setting.

Nearest Tube: Bond Street / Marble Arch

NHA

The deposit will be £24,000 at a rental value of £4,000 (asking price)

Holding deposit = 1 weeks rent of £4,000

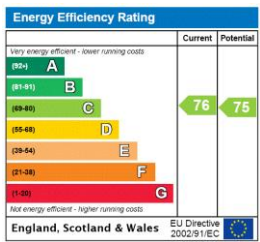
Deposit is 6 weeks rent (£4,500 pw = £24,000 deposit)



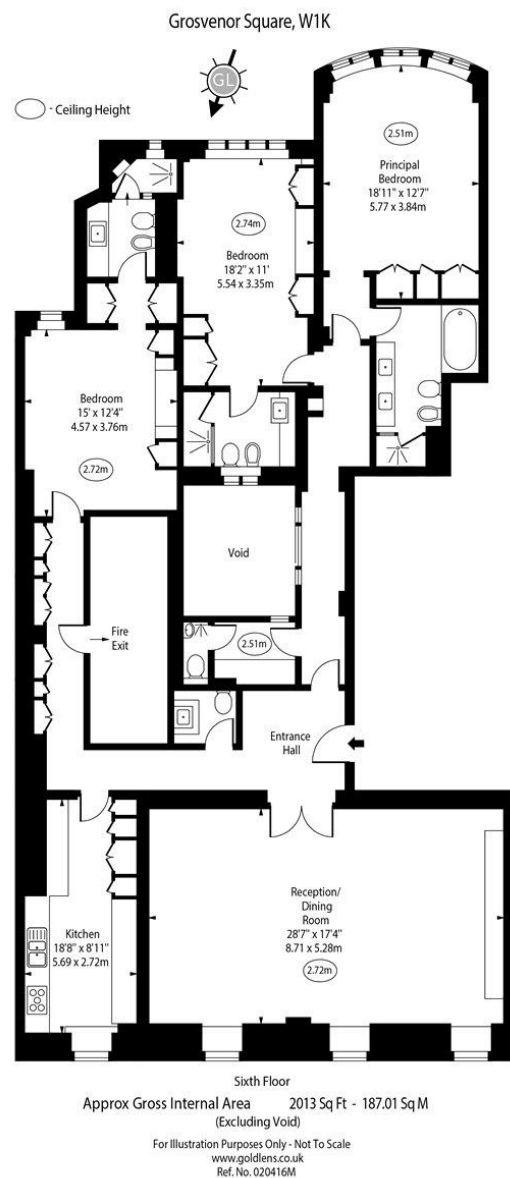


ADDITIONAL INFORMATION

Offers	Available for a minimum term of 12 months longer terms will be considered
Viewing	Strictly by appointment
Local Authority	Westminster County Council - Council Tax Band H







**T: 020 7493 0676**

18 Davies Street, Mayfair, London, W1K 3DS

E: [mayfair@carterjonas.co.uk](mailto:mayfair@carterjonas.co.uk)



*Exclusive UK affiliate of*

**CHRISTIE'S**  
INTERNATIONAL REAL ESTATE

Classification L2 - Business Data

## IMPORTANT INFORMATION

Our property particulars do not represent an offer or contract, or part of one. The information given is without responsibility on the part of the agents, seller(s) or lessor(s) and you should not rely on the information as being factually accurate about the property, its condition or its value. Neither Carter Jonas LLP nor anyone in its employment or acting on its behalf has authority to make any representation or warranty in relation to this property. We have not carried out a detailed survey, nor tested the services, appliances or fittings at the property. The images shown may only represent part of the property and are as they appeared at the time of being photographed. The areas, measurements and distances are approximate only. Where Carter Jonas have been provided with a floorplan by a third party, we can not guarantee that the floorplan has been measured in accordance with IPMS. Any reference to alterations or use does not mean that any necessary planning permission, building regulation or other consent has been obtained. The VAT position relating to the property may change without notice. Administration fees may apply depending on tenancy type. Please contact your local branch for this information.