



GROSVENOR SQUARE, MAYFAIR, W1K
£3,500 per week*

Carter Jonas

GROSVENOR SQUARE, MAYFAIR, LONDON, W1K

A three bedroom apartment of approximately 1,808 square feet.

- Long let, minimum term 12 months
- Furnished
- 3 Bedrooms
- 1 En suite bathroom
- 1 Family bathroom
- 1 Shower room
- 1 Reception / dining room

Mayfair is London's most fashionable destination. With London's finest buildings, largest concentration of luxury hotels, best restaurants, bars, shopping, open spaces and hidden treasures all nestled together in a beautiful village setting.

This sixth-floor apartment overlooking South Audley Street is located in a prestigious building centrally located in the heart of Mayfair. The apartment has been finished to a high standard and has the benefit of 24-hour concierge and a communal courtyard.

Nearest Tube: Bond Street / Marble Arch

NHA

The deposit will be £21,000 at a rental value of £3,500 (asking price)

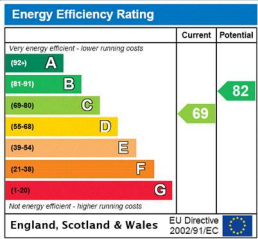
Holding deposit = 1 weeks rent of £3,500

Deposit is 6 weeks rent (£3,500 pw = £21,000 deposit)



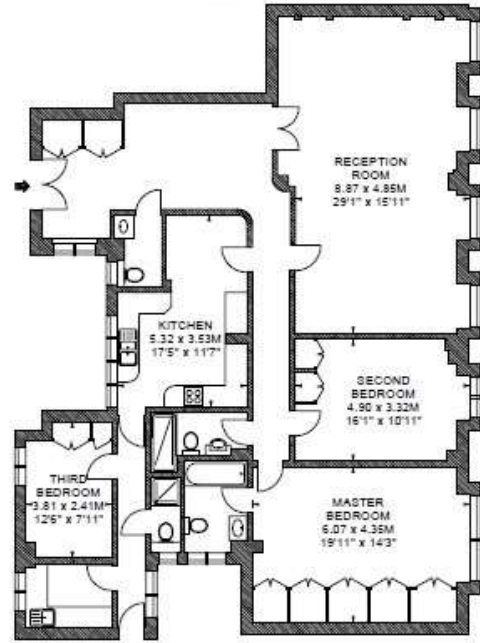
ADDITIONAL INFORMATION

| | |
|-----------------|--|
| Offers | Available for a minimum term of 12 months longer terms will be considered |
| Viewing | Strictly by appointment |
| Local Authority | Westminster County Council - Council Tax Band H |



Flat 28
Sixth Floor
Grosvenor Square, W1

Approximate gross internal area
168 sq m / 1808 sq ft



South
Audley
Street

Grosvenor Square

Scale 1:100

Scale floor plans produced by Mays Floorplans © . Tel 020 3397 4594
All measurements are maximum, and include wardrobes and window bays where applicable



T: 020 7493 0676

18 Davies Street, Mayfair, London, W1K 3DS

E: mayfair@carterjonas.co.uk

carterjonas.co.uk
Offices throughout the UK

A member of
onTheMarket.com
Classification L2 - Business Data

IMPORTANT INFORMATION

Our property particulars do not represent an offer or contract, or part of one. The information given is without responsibility on the part of the agents, seller(s) or lessor(s) and you should not rely on the information as being factually accurate about the property, its condition or its value. Neither Carter Jonas LLP nor anyone in its employment or acting on its behalf has authority to make any representation or warranty in relation to this property. We have not carried out a detailed survey, nor tested the services, appliances or fittings at the property. The images shown may only represent part of the property and are as they appeared at the time of being photographed. The areas, measurements and distances are approximate only. Where Carter Jonas have been provided with a floorplan by a third party, we can not guarantee that the floorplan has been measured in accordance with IPMS. Any reference to alterations or use does not mean that any necessary planning permission, building regulation or other consent has been obtained. The VAT position relating to the property may change without notice. Administration fees may apply depending on tenancy type. Please contact your local branch for this information.