



ELM PARK ROAD, LONDON, SW3
£1,700,000

Carter Jonas

ELM PARK ROAD, LONDON, SW3

Here is a gorgeous two-bedroom two-bathroom raised ground floor lateral apartment right in the heart of Chelsea, tucked away between the ever-popular King's Road and Fulham Road, SW3, and Hyde Park and the River Thames.

The flat has undergone a comprehensive renovation to the highest standards. The kitchen has been entirely remodelled and equipped with top-of-the-line Bosch appliances, including a dishwasher, washing machine, and dryer. Every piece of cabinetry and equipment has been meticulously chosen to blend functionality and elegance seamlessly.

All windows have been upgraded to enhance energy efficiency and aesthetic appeal, and custom-made curtains have been added to complement the overall interior design. These transformative upgrades were envisioned and executed by the distinguished designer, Lady Henrietta Spencer-Churchill.

The original hardwood floors have been expertly polished and restored, elevating their natural beauty and warmth throughout the home. The furnishings and lighting fixtures have been exclusively sourced from Oficina Inglesa, renowned for their exquisite craftsmanship, located at the Chelsea Design Centre.

Both bathrooms have been completely renovated, maximizing the available space and incorporating luxurious ceramic tiles on the walls and floors from Artisans of Devizes, also a well-known supplier at the Chelsea Design Centre. The result is a harmonious blend of contemporary comfort and classic British style, offering a refined living experience in every room of this stunning property.

TENURE Leasehold

LOCAL AUTHORITY

EPC BAND C

HERE IS A GORGEOUS TWO-BEDROOM TWO-BATHROOM RAISED GROUND FLOOR LATERAL APARTMENT RIGHT IN THE HEART OF CHELSEA, TUCKED AWAY BETWEEN THE EVER-POPULAR KING'S ROAD AND FULHAM ROAD, SW3, AND HYDE PARK



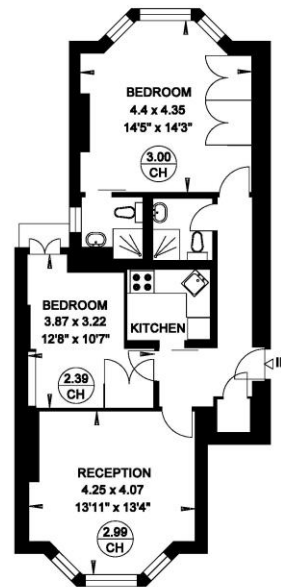
Classification L2 - Business Data





**ELM PARK ROAD
LONDON SW3**

**Gross Internal Area = 62.8 sq. metres
676 sq. feet**



GROUND FLOOR

Mayfair 020 7493 0676

mayfair@carterjonas.co.uk
18 Davies Street, Mayfair, London, W1K 3DS

carterjonas.co.uk
Offices throughout the UK

Exclusive UK affiliate of
CHRISTIE'S
INTERNATIONAL REAL ESTATE

IMPORTANT INFORMATION

These particulars are for general information purposes only and do not represent an offer or contract or part of one. Carter Jonas or anyone in their employment has made every attempt to ensure that the particulars and other information provided are as accurate as possible and they are not intended to amount to advice on which you should rely as being factually accurate. Full information which may be relevant to your decision regarding the property can be found on the property listing on carterjonas.co.uk or, (including off market properties) on the brochure or a separately available material information sheet. We would advise you to confirm the details of any material information prior to any offer being submitted. You should not assume that the property has all necessary planning, building regulations or other consents and Carter Jonas has not tested any services, facilities or equipment. Any measurements and distances given are approximate only. Where Carter Jonas has been provided with a floorplan by a third party, we cannot guarantee that the floorplan has been measured in accordance with IPMS. Purchasers must satisfy themselves of all of the aforementioned by independent inspection or otherwise. Our images only represent part of the property as it appeared at the time they were taken and do not represent the furnishings included; these are confirmed in a separate inventory. If you require further information, please contact us.