



**EBURY STREET, BELGRAVIA, SW1W**  
£1,845 per week\*

**Carter Jonas**



---

## EBURY STREET, BELGRAVIA, LONDON, SW1W

A three-bedroom apartment of approximately 1,034 square feet

- 3 Bedrooms
- 2 Bathrooms
- Separate Kitchen
- 24hr Porter
- Lift Access
- Light & Bright

### THE PROPERTY

An unusually bright lateral apartment in this sought-after building with 24hr portage. It benefits from a large new separate kitchen, lift access and off-street parking - available strictly by separate negotiation.

### LOCATION

Belgravia is located slightly to the east of Knightsbridge and is the chosen location for embassies, international professionals and British alike. Bordered by Sloane Street on the west, Ebury Street to the south, Victoria station to the west and Hyde Park to the north, it is also the location of many of London's top hotels and as such draws varied, wealthy residents and an interesting mix of global visitors and part time inhabitants.

Nearest Tube: Victoria

AST

The deposit will be £11,070 at a rental value of £1,845 (asking price).

Holding deposit = 1 weeks rent of £1,845

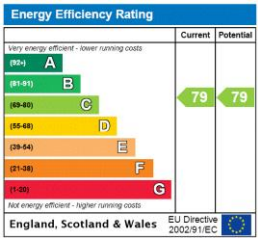
Deposit is 6 weeks rent (£1,845pw = £11,070 deposit)





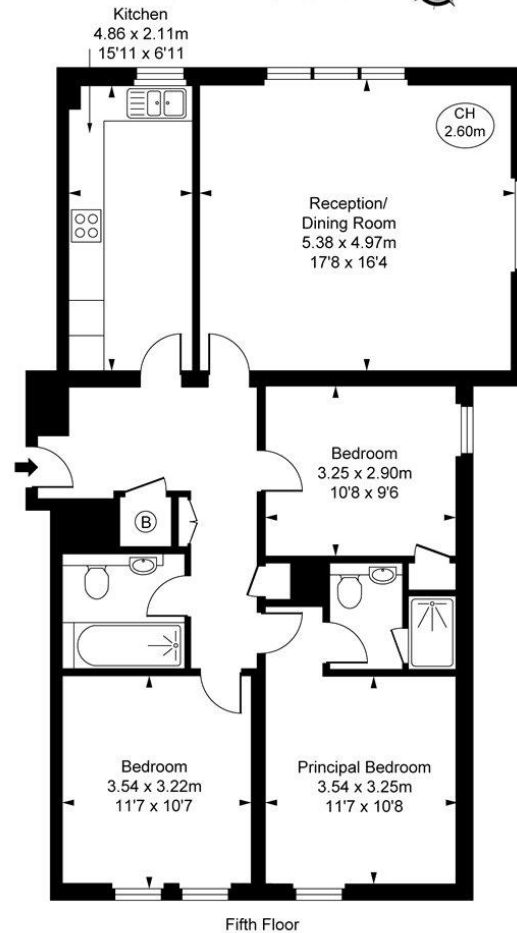
ADDITIONAL INFORMATION

Offers	Available for a minimum term of 12 months longer terms will be considered
Viewing	Strictly by appointment
Local Authority	Westminster City Council - Council Tax Band G
Material Information	Gas central heating and hot water Superfast broadband to cabinet



Belgravia Court,  
Ebury Street, SW1W  
Approximate Gross Internal Area  
96.04 sq m / 1,034 sq ft

( CH = Ceiling Heights )



This plan is not to scale. It is for guidance and not for valuation purposes.  
All measurements and areas are approximate only, and have been prepared in accordance with the current edition of the RICS Code of Measuring Practice.  
© Fulham Performance



**T: 020 7493 0676**

18 Davies Street, Mayfair, London, W1K 3DS

E: [mayfair@carterjonas.co.uk](mailto:mayfair@carterjonas.co.uk)



*Exclusive UK affiliate of*

**CHRISTIE'S**  
INTERNATIONAL REAL ESTATE

Classification L2 - Business Data

#### IMPORTANT INFORMATION

Our property particulars do not represent an offer or contract, or part of one. The information given is without responsibility on the part of the agents, seller(s) or lessor(s) and you should not rely on the information as being factually accurate about the property, its condition or its value. Neither Carter Jonas LLP nor anyone in its employment or acting on its behalf has authority to make any representation or warranty in relation to this property. We have not carried out a detailed survey, nor tested the services, appliances or fittings at the property. The images shown may only represent part of the property and are as they appeared at the time of being photographed. The areas, measurements and distances are approximate only. Where Carter Jonas have been provided with a floorplan by a third party, we can not guarantee that the floorplan has been measured in accordance with IPMS. Any reference to alterations or use does not mean that any necessary planning permission, building regulation or other consent has been obtained. The VAT position relating to the property may change without notice. Administration fees may apply depending on tenancy type. Please contact your local branch for this information.