



**CATHERINE PLACE, WESTMINSTER, SW1E**  
£692.30 per week\*

**Carter Jonas**



---

# CATHERINE PLACE, WESTMINSTER, LONDON, SW1E 6DY

A one-bedroom apartment of approximately 520 square feet

- Newly Refurbished
- Open Plan Reception Room
- 1 Bedroom
- 1 Bathroom
- Patio garden
- Furnished

This charming property has been newly refurbished and benefits from a small private patio garden.

The apartment is well laid out with a spacious bedroom, open plan living room and kitchen and is situated on this quiet side street close to the transport links of Victoria.

Westminster lies on the north bank of the River Thames. It has its' own University and shopping street alongside a substantial residential element which is home to many Members of Parliament, political journalists and students. Its' core encompasses the famous Historic landmarks of the Houses of Parliament and Westminster Abbey and has been the seat of the Government of England for almost a thousand years. A more recent landmark and tourist attraction is the London Eye from where fantastic views of the City can be seen.

Nearest Tube: Victoria / St James's Park

Minimum term 12 months

Council tax Band D

AST

The deposit will be £3,461.50 at a rental value of £692.30 pw £3000 pm (asking price)

Holding deposit = 1 weeks rent of £692.30

Deposit is 5 weeks rent (£692.30 pw = £3,461.30 deposit)

Standard Copper Broadband

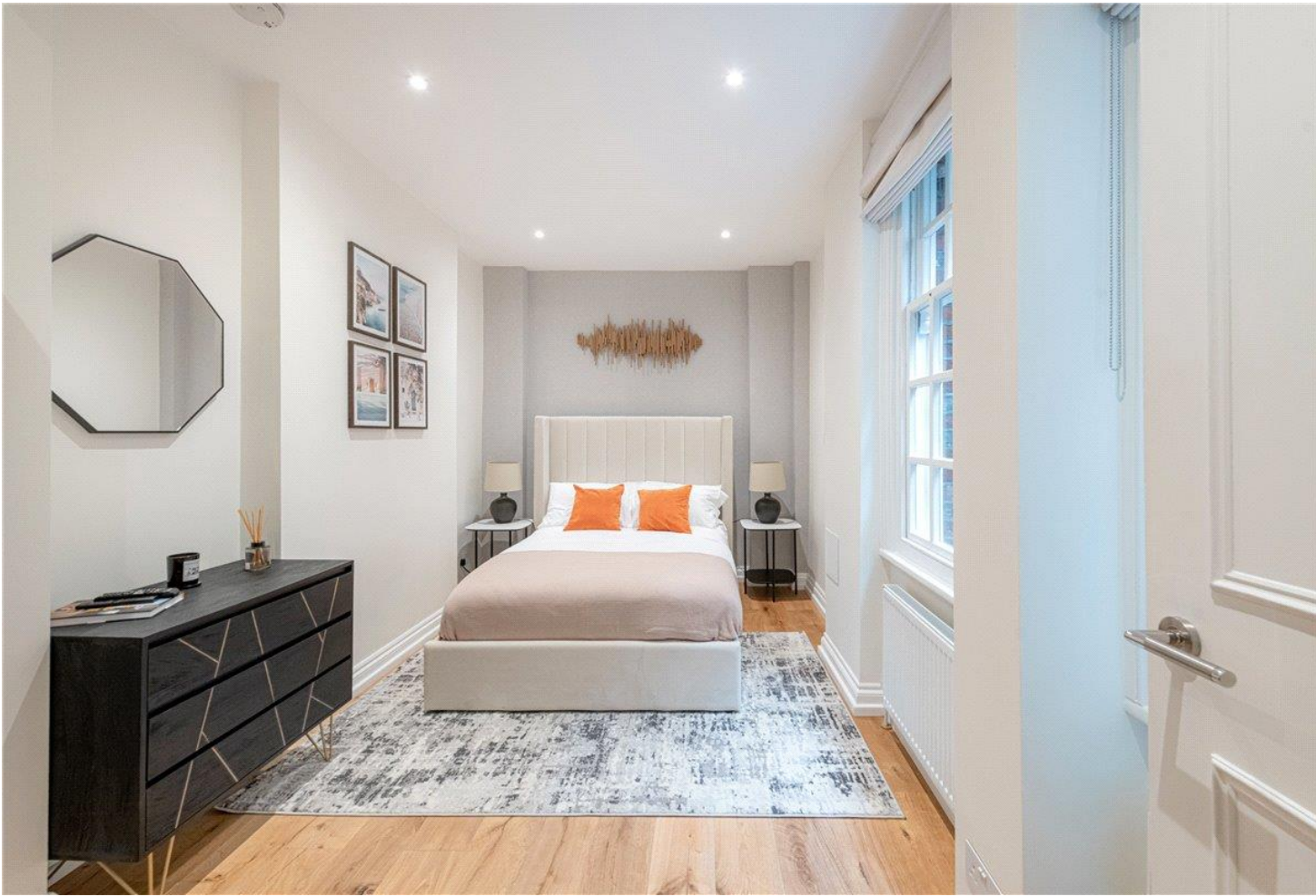
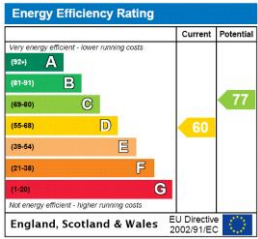
Mains Gas and Hot Water





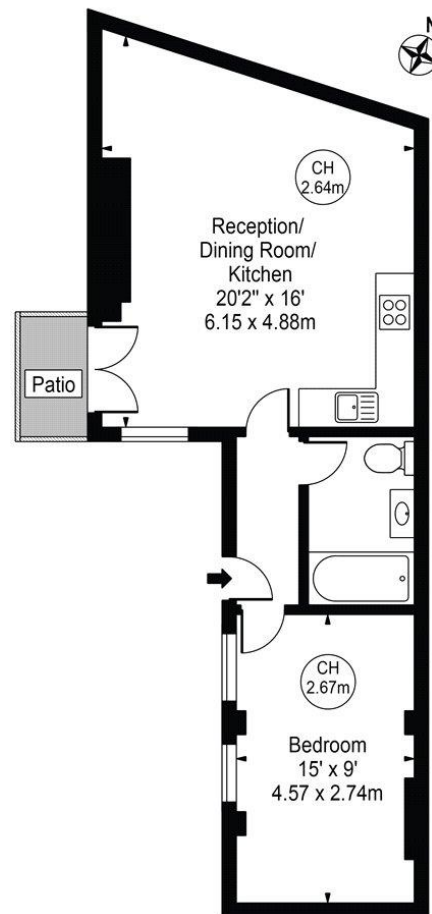
ADDITIONAL INFORMATION

Offers	Available for a minimum term of 12 months longer terms will be considered
Viewing	Strictly by appointment
Local Authority	Westminster City Council - Council Tax Band D
Material Information	Standard Copper Broadband Mains Gas and Hot Water



# Catherine Place

Approx. Gross Internal Area 523 Sq Ft - 48.59 Sq M



Lower Ground Floor

For Illustration Purposes Only - Not To Scale

This floor plan should be used as a general outline for guidance only and does not constitute in whole or in part an offer or contract. Any intending purchaser or lessee should satisfy themselves by inspection, searches, enquiries and full survey as to the correctness of each statement. Any areas, measurements or distances quoted are approximate and should not be used to value a property or be the basis of any sale or let. Copyright Morriarti Photography & Design LTD



T: 020 7493 0676

18 Davies Street, Mayfair, London, W1K 3DS

E: mayfair@carterjonas.co.uk

A member of



Exclusive UK affiliate of

**CHRISTIE'S**  
INTERNATIONAL REAL ESTATE

Classification L2 - Business Data

## IMPORTANT INFORMATION

These particulars are for general information purposes only and do not represent an offer or contract or part of one. Carter Jonas or anyone in their employment has made every attempt to ensure that the particulars and other information provided are as accurate as possible and they are not intended to amount to advice on which you should rely as being factually accurate. Full information which may be relevant to your decision regarding the property can be found on the property listing on [carterjonas.co.uk](http://carterjonas.co.uk) or a separately available material information sheet, and we would advise you to confirm the details of any material information prior to any offer being submitted. You should not assume that the property has all necessary planning, building regulations or other consents and Carter Jonas has not tested any services, facilities, or equipment. Any measurements and distances given are approximate only. Where Carter Jonas has been provided with a floorplan by a third party, we cannot guarantee that the floorplan has been measured in accordance with IPMS. Purchasers or prospective tenants must satisfy themselves of all of the aforementioned by independent inspection or otherwise. Our images only represent part of the property as it appeared at the time they were taken and do not represent the furnishings included; these are confirmed in a separate inventory. If you require further information, please contact us. \*Administration fees may apply depending on tenancy type. Please contact your local branch for this information.