



**GROSVENOR SQUARE, MAYFAIR, W1K**  
£2,800 per week\*

**Carter Jonas**



# GROSVENOR SQUARE, MAYFAIR, LONDON, W1K 2HN

A two bedroom apartment of approximately 1,679 square feet.

- Furnished
- 4 Bedrooms
- Reception Room
- Dining Room
- Kitchen
- Bathroom
- Shower Room
- En Suite Shower Room

This exceptional lateral apartment is situated on the ground floor of a prestigious building centrally located in the heart of Mayfair. The apartment has been finished to a high standard and has the benefit of 24 hour concierge, a communal courtyard and views across Grosvenor Square from the reception room.

Mayfair is London's most fashionable destination. With London's finest buildings, largest concentration of luxury hotels, best restaurants, bars, shopping, open spaces and hidden treasures all nestled together in a beautiful village setting.

Nearest Tube: Bond Street / Marble Arch

Nearest Tube: Bond Street / Marble Arch

NHA

The deposit will be £16,800 at a rental value of £2,800 (asking price).

Holding deposit = 1 weeks rent of £2,800

Deposit is 6 weeks rent (£2,800 pw = £16,800 deposit)

Minimum Term 12 months

Council Tax Band H

Community scheme heating and hot water

Ultrafast broadband and mobile coverage available





---

## ADDITIONAL INFORMATION

---

Offers Available for a minimum term of 12 months longer terms will be considered

---

Viewing Strictly by appointment

---

Local Authority Westminster County Council - Council Tax Band H

---

Directions

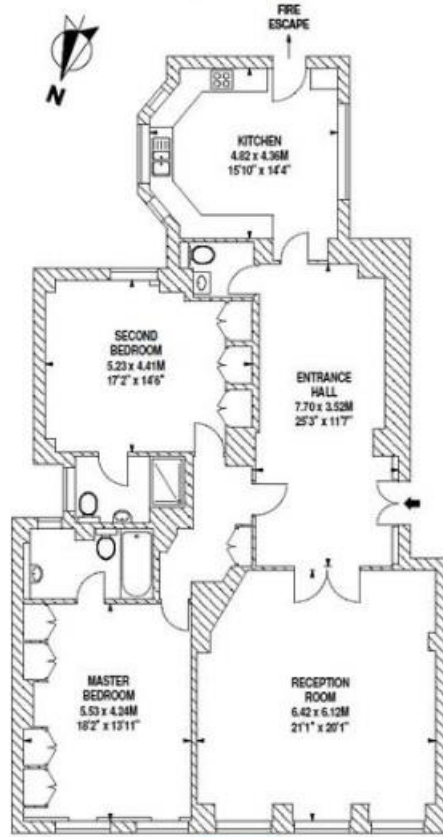
---





**Flat 1  
Ground Floor  
Grosvenor Square, W1**

Approximate gross internal area  
156 sq m / 1679 sq ft



Energy Efficiency Rating		Current	Potential
Very energy efficient - lower running costs			
(92-100)	A		
(81-91)	B		85
(69-80)	C	69	
(55-68)	D		
(39-54)	E		
(21-38)	F		
(1-20)	G		
Not energy efficient - higher running costs			
England, Scotland & Wales		EU Directive 2002/91/EC	



**T: 020 7493 0676**

18 Davies Street, Mayfair, London, W1K 3DS

E: [mayfair@carterjonas.co.uk](mailto:mayfair@carterjonas.co.uk)

A member of



*Exclusive UK affiliate of*

**CHRISTIE'S**  
INTERNATIONAL REAL ESTATE

Classification L2 - Business Data

**IMPORTANT INFORMATION**

These particulars are for general information purposes only and do not represent an offer or contract or part of one. Carter Jonas or anyone in their employment has made every attempt to ensure that the particulars and other information provided are as accurate as possible and they are not intended to amount to advice on which you should rely as being factually accurate. Full information which may be relevant to your decision regarding the property can be found on the property listing on [carterjonas.co.uk](http://carterjonas.co.uk) or a separately available material information sheet, and we would advise you to confirm the details of any material information prior to any offer being submitted. You should not assume that the property has all necessary planning, building regulations or other consents and Carter Jonas has not tested any services, facilities, or equipment. Any measurements and distances given are approximate only. Where Carter Jonas has been provided with a floorplan by a third party, we cannot guarantee that the floorplan has been measured in accordance with IPMS. Purchasers or prospective tenants must satisfy themselves of all of the aforementioned by independent inspection or otherwise. Our images only represent part of the property as it appeared at the time they were taken and do not represent the furnishings included; these are confirmed in a separate inventory. If you require further information, please contact us. \*Administration fees may apply depending on tenancy type. Please contact your local branch for this information.