



**GROSVENOR SQUARE, MAYFAIR, W1K**  
£1,730.76 per week\*

**Carter Jonas**



# GROSVENOR SQUARE, MAYFAIR, LONDON, W1K 6LE

Newly refurbished apartment measuring approximately 1,031 square feet

- 24hr Concierge
- 2 Bedrooms
- 2 Bathrooms
- Separate Kitchen
- Garden Square Location
- Utility Room
- Lift
- Furnished

A beautiful two-bedroom two-bathroom apartment located in a 24 hour portered luxury block of elegant and spacious mansion flats with lift ideally situated on prestigious Grosvenor Square. Having just been comprehensively refurbished throughout the apartment is offered fully furnished to a high standard.

Mayfair is London's most fashionable destination. With London's finest buildings, largest concentration of luxury hotels, best restaurants, bars, shopping, open spaces and hidden treasures all nestled together in a beautiful village setting.

Nearest Tube: Bond Street/Marble Arch.

NHA

The deposit will be £10,800 at a rental value of £1,730.76 per week (asking price) Holding deposit = 1 week's rent of £1,730.76 per week

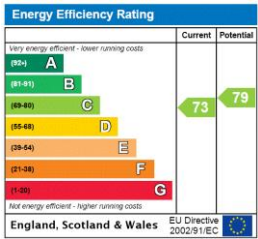
Deposit is 6 weeks rent (£1,730.76 per week = £10,384.56 deposit)





ADDITIONAL INFORMATION

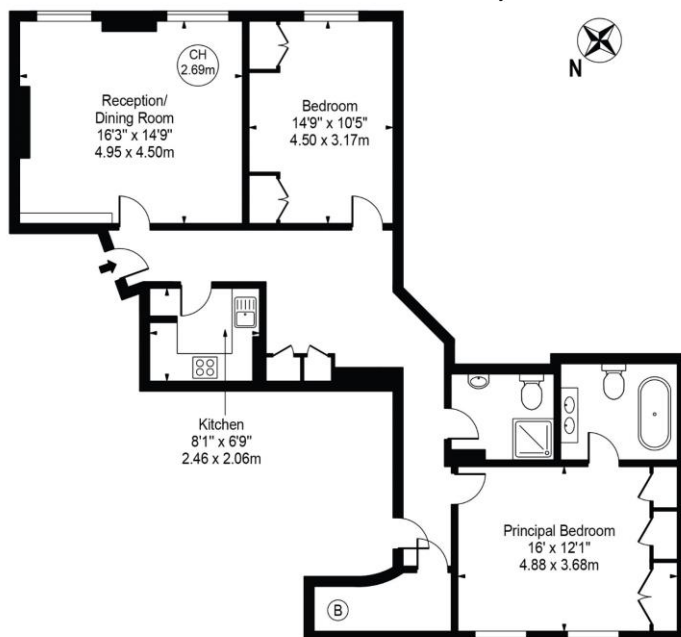
|                      |   |
|----------------------|---|
| Offers               | Available for a minimum term of 12 months<br>longer terms will be considered            |
| Viewing              | Strictly by appointment   |
| Local Authority      | Westminster County Council - Council Tax Band H   |
| Material Information | Boiler and radiators for heating, mains gas and hot water<br>Standard, copper broadband |





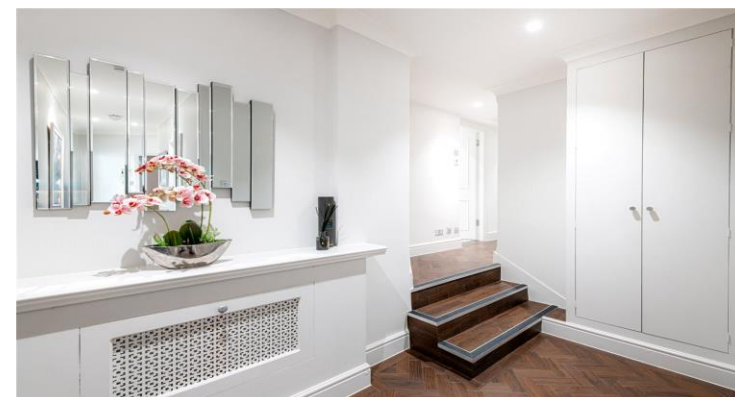
# Grosvenor Square

Approx. Gross Internal Area 1031 Sq Ft - 95.78 Sq M



Lower Ground Floor  
For Illustration Purposes Only - Not To Scale

This floor plan should be used as a general outline for guidance only and does not constitute in whole or in part an offer or contract. Any intending purchaser or lessee should satisfy themselves by inspection, searches, enquiries and full survey as to the correctness of each statement. Any areas, measurements or distances quoted are approximate and should not be used to value a property or be the basis of any sale or let. Copyright Morriarti Photography & Design LTD



T: 020 7493 0676

18 Davies Street, Mayfair, London, W1K 3DS

E: mayfair@carterjonas.co.uk



Exclusive UK affiliate of

**CHRISTIE'S**  
INTERNATIONAL REAL ESTATE

Classification L2 - Business Data

## IMPORTANT INFORMATION

These particulars are for general information purposes only and do not represent an offer or contract or part of one. Carter Jonas or anyone in their employment has made every attempt to ensure that the particulars and other information provided are as accurate as possible and they are not intended to amount to advice on which you should rely as being factually accurate. Full information which may be relevant to your decision regarding the property can be found on the property listing on [carterjonas.co.uk](http://carterjonas.co.uk) or a separately available material information sheet, and we would advise you to confirm the details of any material information prior to any offer being submitted. You should not assume that the property has all necessary planning, building regulations or other consents and Carter Jonas has not tested any services, facilities, or equipment. Any measurements and distances given are approximate only. Where Carter Jonas has been provided with a floorplan by a third party, we cannot guarantee that the floorplan has been measured in accordance with IPMS. Purchasers or prospective tenants must satisfy themselves of all of the aforementioned by independent inspection or otherwise. Our images only represent part of the property as it appeared at the time they were taken and do not represent the furnishings included; these are confirmed in a separate inventory. If you require further information, please contact us. \*Administration fees may apply depending on tenancy type. Please contact your local branch for this information.