



MONTAGU MANSIONS, LONDON, W1U

£1,625 per week*

Carter Jonas

FLAT 102, MONTAGU MANSIONS, LONDON, W1U 6LF

- 2 Bedrooms
- 2 Bathrooms
- Reception room
- Dining Room
- Kitchen
- Fourth Floor
- Furnished

THE PROPERTY

This beautifully presented two-bedroom apartment is located in the sought-after Montagu Mansions, close to Montagu Square. It features a spacious and bright living space, comprising two bedrooms, two modern bathrooms, and a separate kitchen and dining area. The apartment is bathed in natural light and is equipped with contemporary fixtures throughout.

Holding deposit is 1 week's rent = £1,625 (at asking price)

Security deposit is 6 week's rent = £9,750 (at asking price £1,625pw)

Minimum Term 12 months

Council Tax Band F

For the latest information on broadband and mobile coverage, please visit [checker.ofcom](https://checker.ofcom.gov.uk/) for the most up-to-date details.


Montagu Mansions, a traditional red brick mansion block running between York Street and Dorset Street, offers convenient access to Marylebone High Street's boutiques and restaurants, Baker Street's amenities, and the serene green spaces of Regent's Park.

This elegantly presented two-bedroom apartment is now available to rent in the sought-after Montagu Mansions.



ADDITIONAL INFORMATION

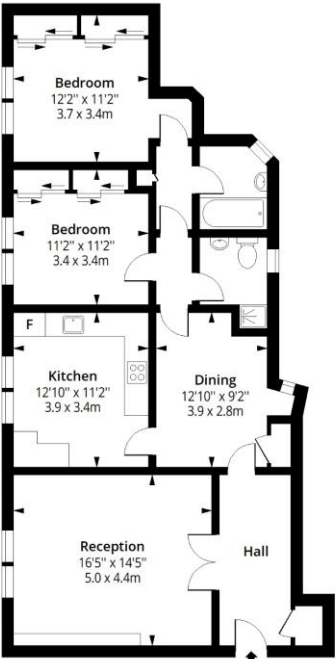
Offers	Available for a minimum term of 12 months longer terms will be considered
Viewing	Strictly by appointment
Local Authority	Westminster City Council - Council Tax Band F

Energy Efficiency Rating		
	Current	Potential
Very energy efficient - lower running costs		
(92+) A		
(81-91) B		
(69-80) C		77
(55-68) D		
(39-54) E	48	
(21-38) F		
(1-20) G		
Not energy efficient - higher running costs		
England, Scotland & Wales	EU Directive 2002/91/EC	



Montagu Mansions, W1U

Approx. Gross Internal Area 1052 Sq Ft - 97.73 Sq M



Fourth Floor

Floor Area 1052 Sq Ft - 97.73 Sq M



Measured according to RICS IPMS2. Floor plan is for illustrative purposes only and is not to scale. Every attempt has been made to ensure the accuracy of the floor plan shown, however all measurements, fixtures, fittings and data shown are an approximate interpretation for illustrative purposes only. 1 sq m = 10.76 sq feet.

lpaplus.com

Date: 27/6/2024



IMPORTANT INFORMATION

These particulars are for general information purposes only and do not represent an offer or contract or part of one. Carter Jonas or anyone in their employment has made every attempt to ensure that the particulars and other information provided are as accurate as possible and they are not intended to amount to advice on which you should rely as being factually accurate. Full information which may be relevant to your decision regarding the property can be found on the property listing on carterjonas.co.uk or a separately available material information sheet, and we would advise you to confirm the details of any material information prior to any offer being submitted. You should not assume that the property has all necessary planning, building regulations or other consents and Carter Jonas has not tested any services, facilities, or equipment. Any measurements and distances given are approximate only. Where Carter Jonas has been provided with a floorplan by a third party, we cannot guarantee that the floorplan has been measured in accordance with IPMS. Purchasers or prospective tenants must satisfy themselves of all of the aforementioned by independent inspection or otherwise. Our images only represent part of the property as it appeared at the time they were taken and do not represent the furnishings included; these are confirmed in a separate inventory. If you require further information, please contact us. *Administration fees may apply depending on tenancy type. Please contact your local branch for this information.

T: 020 7486 8866

37 New Cavendish Street, London, W1G 9TL

E: marylebone@carterjonas.co.uk

A member of



Exclusive UK affiliate of

CHRISTIE'S
INTERNATIONAL REAL ESTATE

Classification L2 - Business Data