



SEYMOUR PLACE, MARYLEBONE, W1H
£625 per week*

Carter Jonas

FLAT 1, SEYMOUR PLACE, MARYLEBONE, LONDON, W1H 7NQ

- 1 Bedroom
- 1 Reception Room
- 1 Bathroom
- Flat/Apartment
- Convenient location

THE PROPERTY

The apartment has retained period features, and comprises a large reception room, double bedroom, bathroom and fully fitted kitchen with dining hall.

The property is professionally managed by The Portman Estate.

Available for long term rental on an unfurnished basis or furnished (at separate cost).

Holding deposit is 1 week's rent = £625 (at asking price)

Security deposit is 5 week's rent = £3,125 (at asking price £625pw)

Minimum Term 12 months

Council Tax Band D

For the latest information on broadband and mobile coverage, please visit [/checker.ofcom](https://checker.ofcom.gov.uk/) for the most up-to-date details.

Seymour Place is situated close to Marylebone High Street and its lively section of stores, restaurants, and cafes. The open areas and leisure amenities of Hyde Park lie to the south. Edgware Road (Circle/District/Hammersmith & City), Marylebone (Bakerloo), Marble Arch (Central), Baker Street (Jubilee/Bakerloo), and Paddington are just a some of the nearby convenient transportation hubs that are close to the property (Elizabeth & mainline Station).

The Portman Estate's 110 acres of land within Marylebone, London W1, has a rich heritage dating back to the 16th century and is the setting for continual investment in premium residential properties, shops and independent businesses. The Portman Estate includes key places of architectural and historical interest along with a vibrant blend of shops, including Portman Village, restaurants, wine-bars,

Large one bedroom apartment close to Oxford Street shops and Marble Arch tube station.



hotels and garden squares - a perfect mix of leisure opportunities for residents in the heart of London's West End.

ADDITIONAL INFORMATION

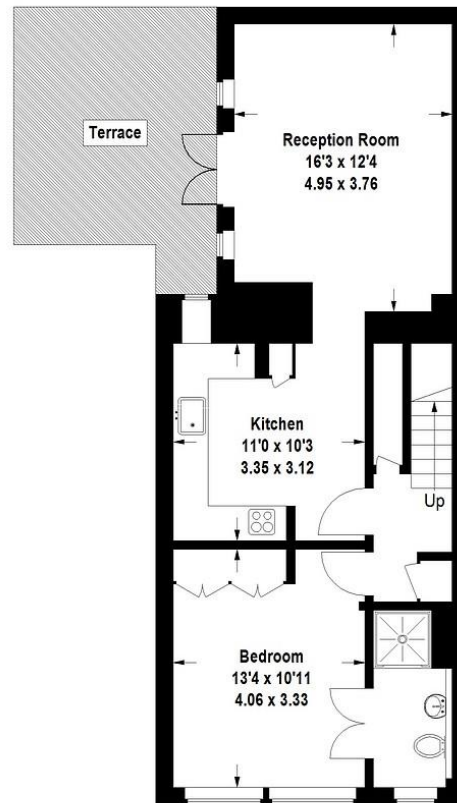
Offers	Available for a minimum term of 12 months longer terms will be considered
Viewing	Strictly by appointment
Local Authority	Westminster City Council - Council Tax Band D



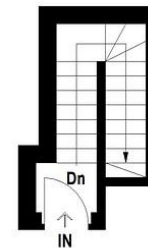
Energy Efficiency Rating		
	Current	Potential
Very energy efficient - lower running costs		
(92+) A		
(81-91) B		
(69-80) C	77	81
(55-68) D		
(39-54) E		
(21-38) F		
(1-20) G		
Not energy efficient - higher running costs		
England, Scotland & Wales	EU Directive 2002/91/EC	

Seymour Place, W1

Approximate Gross Internal Area
62.6 sq m / 674 sq ft



Lower Ground Floor



Ground Floor

This plan is for layout guidance only. Not drawn to scale unless stated. Windows and door openings are approximate. Whilst every care is taken in the preparation of this plan, please check all dimensions, shapes and compass bearings before making any decisions reliant upon them. (ID 135130)

IMPORTANT INFORMATION

These particulars are for general information purposes only and do not represent an offer or contract or part of one. Carter Jonas or anyone in their employment has made every attempt to ensure that the particulars and other information provided are as accurate as possible and they are not intended to amount to advice on which you should rely as being factually accurate. Full information which may be relevant to your decision regarding the property can be found on the property listing on carterjonas.co.uk or a separately available material information sheet, and we would advise you to confirm the details of any material information prior to any offer being submitted. You should not assume that the property has all necessary planning, building regulations or other consents and Carter Jonas has not tested any services, facilities, or equipment. Any measurements and distances given are approximate only. Where Carter Jonas has been provided with a floorplan by a third party, we cannot guarantee that the floorplan has been measured in accordance with IPMS. Purchasers or prospective tenants must satisfy themselves of all of the aforementioned by independent inspection or otherwise. Our images only represent part of the property as it appeared at the time they were taken and do not represent the furnishings included; these are confirmed in a separate inventory. If you require further information, please contact us. *Administration fees may apply depending on tenancy type. Please contact your local branch for this information.

T: 020 7486 8866

37 New Cavendish Street, London, W1G 9TL

E: marylebone.lettings@carterjonas.co.uk

A member of



Exclusive UK affiliate of

CHRISTIE'S
INTERNATIONAL REAL ESTATE

Classification L2 - Business Data