



UPPER BERKELEY STREET, MARYLEBONE, W1H
£1,250 per week*

Carter Jonas

FLAT 4, UPPER BERKELEY STREET, MARYLEBONE, LONDON, W1H 7QA

- Complimentary membership to Portman Concierge.
- Professionally managed by The Portman Estate.
- Two well-proportioned bedrooms
- Ample closet space
- Two modern bathrooms
- Practical utility room for storage
- Located on the top floor with direct lift access Available for long term rental on an unfurnished basis, or furnished (at separate cost)

THE PROPERTY

Nestled in the heart of the picturesque Upper Berkeley Street, this charming apartment presents the perfect blend of elegance and functionality.

This delightful apartment on Upper Berkeley Street boasts ample living space and features two double bedrooms, two bathrooms, and an open-plan kitchen and reception area. Additionally, the flat includes a utility room and a separate WC.

The property showcases beautiful wooden flooring throughout, a fully equipped kitchen, and built-in wardrobes in the bedrooms. One bathroom is designed with a shower, while the other features both a bathtub and a shower.

The property is professionally managed by The Portman Estate.

Available for long term rental on an unfurnished basis, or furnished (at separate cost)

Complimentary membership to Portman Concierge.

Upper Berkeley Street is a charming and picturesque street located in the heart of London. Situated in the affluent neighbourhood of Marylebone, the street is lined with elegant Georgian townhouses and offers easy access to numerous boutiques, restaurants, and cultural attractions, making it a popular destination for both locals and tourists alike. Marble Arch station is located approximately 0.2 miles and Edgware Road station approximately 0.6 miles.

Two-bedroom, two-bathroom apartment with lift in a period building located close to both Bond Street and Marble Arch underground stations.



The Portman Estate is a prestigious property portfolio located in the heart of central London, covering 110 acres of prime real estate in Marylebone. Renting through The Portman Estate comes with the advantage of an in-house property management team, providing responsive, hands-on service to ensure residents' needs are met quickly and efficiently. This dedicated team helps maintain the quality of living, handling everything from routine maintenance to emergency repairs, making the rental experience hassle-free.

Holding deposit is 1 week's rent = £1,250 (at asking price)

Security deposit is 6 week's rent = £7,500 (at asking price £1,250pw)

Minimum term 12 months

Council Tax Band F

For the latest information on broadband and mobile coverage, please visit [/checker.ofcom](https://www.checker.ofcom.gov.uk/) for the most up-to-date details.

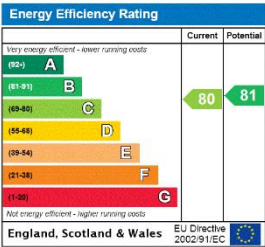
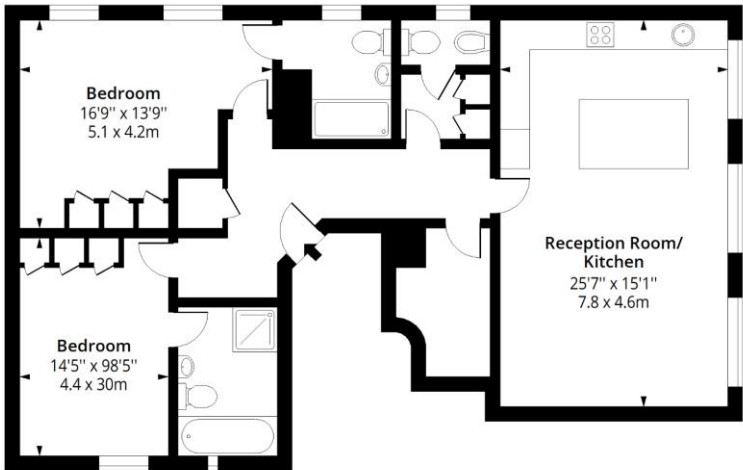
ADDITIONAL INFORMATION

Offers	Available for a minimum term of 12 months longer terms will be considered
Viewing	Strictly by appointment
Local Authority	Westminster City Council - Council Tax Band F



Upper Berkeley Street, W1H

Approx. Gross Internal Area 1136 Sq Ft - 105.53 Sq M



Fourth Floor

Floor Area 1136 Sq Ft - 105.53 Sq M



Measured according to RICS IPMS2. Floor plan is for illustrative purposes only and is not to scale. Every attempt has been made to ensure the accuracy of the floor plan shown, however all measurements, fixtures, fittings and data shown are an approximate interpretation for illustrative purposes only. 1 sq m = 10.76 sq feet.

lpaplus.com

Date: 13/11/2023

T: 020 7486 8866

37 New Cavendish Street, London, W1G 9TL

E: marylebone.lettings@carterjonas.co.uk

A member of



Exclusive UK affiliate of

CHRISTIE'S
INTERNATIONAL REAL ESTATE

IMPORTANT INFORMATION

These particulars are for general information purposes only and do not represent an offer or contract or part of one. Carter Jonas or anyone in their employment has made every attempt to ensure that the particulars and other information provided are as accurate as possible and they are not intended to amount to advice on which you should rely as being factually accurate. Full information which may be relevant to your decision regarding the property can be found on the property listing on carterjonas.co.uk or a separately available material information sheet, and we would advise you to confirm the details of any material information prior to any offer being submitted. You should not assume that the property has all necessary planning, building regulations or other consents and Carter Jonas has not tested any services, facilities, or equipment. Any measurements and distances given are approximate only. Where Carter Jonas has been provided with a floorplan by a third party, we cannot guarantee that the floorplan has been measured in accordance with IPMS. Purchasers or prospective tenants must satisfy themselves of all of the aforementioned by independent inspection or otherwise. Our images only represent part of the property as it appeared at the time they were taken and do not represent the furnishings included; these are confirmed in a separate inventory. If you require further information, please contact us. *Administration fees may apply depending on tenancy type. Please contact your local branch for this information.