



**GLOUCESTER PLACE, MARYLEBONE, W1U**  
£300 per week\*

**Carter Jonas**

## ROOM 21, GLOUCESTER PLACE, MARYLEBONE, LONDON, W1U 8JL

- Complimentary membership to Portman Concierge.
- Bedroom/Living Space
- Self-contained Kitchenette
- Shared Bathroom Facilities
- Ground Floor
- Long Let

### THE PROPERTY

Studio room with kitchenette. The bathroom facilities are shared with other apartments in the building. Unfurnished.

**\*THIS PROPERTY HAS A SHARED BATHROOM\***

The property is professionally managed by The Portman Estate.

Available for long term rental on an unfurnished basis, or furnished (at separate cost)

Complimentary membership to Portman Concierge.

Gloucester Place is ideally situated for the retail and entertainment options in Marylebone and St. Johns Wood, all of which are only 0.7 miles away, as well as the natural areas of close-by Regent's Park. It is situated just north of Dorset Square (approximately 320 meters). Marylebone Station, which serves the Jubilee, Bakerloo, Metropolitan, Circle, Hammersmith, and City lines, is conveniently situated (approximately 0.2 miles away), as is Baker Street Underground Station.

The Portman Estate's 110 acres of land within Marylebone, London W1, has a rich heritage dating back to the 16th century and is the setting for continual investment in premium residential properties, shops and independent businesses. The Portman Estate includes key places of architectural and historical interest along with a vibrant blend of shops, including Portman Village, restaurants, wine-bars, hotels and garden squares - a perfect mix of leisure opportunities for residents in the heart of London's West End.

Holding deposit is 1 week's rent = £300 (at asking price)

**A bright carpeted room with kitchenette situated on the third floor of this period building ideally located in central Marylebone. \*THIS PROPERTY HAS A SHARED BATHROOM\***



Security deposit is 5 week's rent = £1,500 (at asking price £300 per week)

Minimum term 12 months

Council Tax Band - TBC

For the latest information on broadband and mobile coverage, please visit [checker.ofcom](https://www.checker.ofcom.gov.uk/) for the most up-to-date details.

---

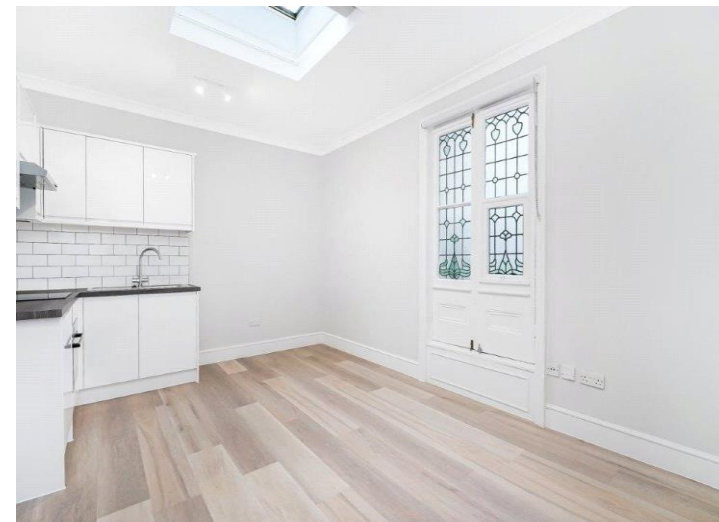
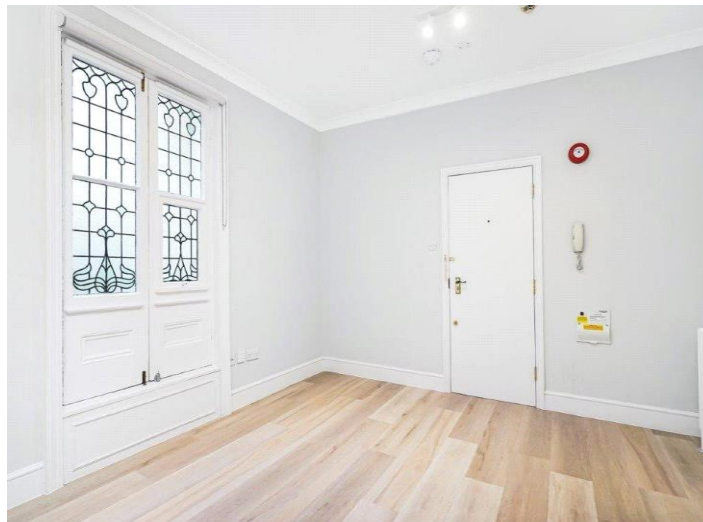
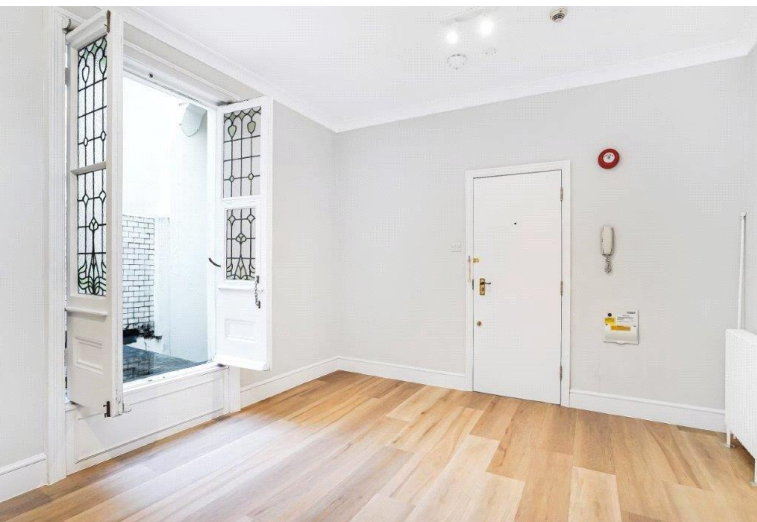
## ADDITIONAL INFORMATION

Offers	Available for a minimum term of 12 months longer terms will be considered
--------	---

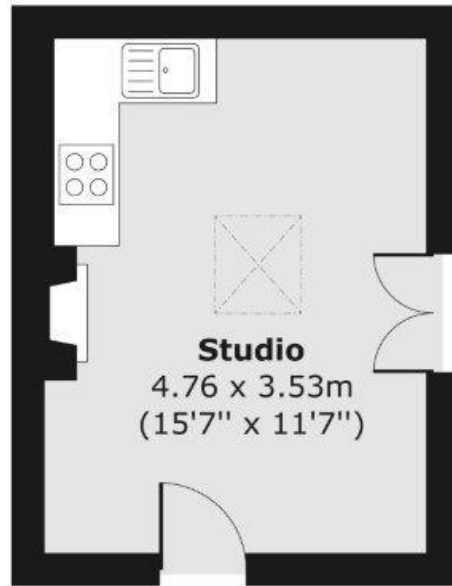
Viewing	Strictly by appointment
---------	-------------------------

Local Authority	Westminster City Council - Council Tax Band NA
-----------------	--

---



### Raised Ground Floor



**Studio**  
4.76 x 3.53m  
(15'7" x 11'7")

Total area (approx.) 16.63 sq. m (179 sq. ft)



**T: 020 7486 8866**

37 New Cavendish Street, London, W1G 9TL

E: [marylebone.lettings@carterjonas.co.uk](mailto:marylebone.lettings@carterjonas.co.uk)

A member of



*Exclusive UK affiliate of*

**CHRISTIE'S**  
INTERNATIONAL REAL ESTATE

### IMPORTANT INFORMATION

These particulars are for general information purposes only and do not represent an offer or contract or part of one. Carter Jonas or anyone in their employment has made every attempt to ensure that the particulars and other information provided are as accurate as possible and they are not intended to amount to advice on which you should rely as being factually accurate. Full information which may be relevant to your decision regarding the property can be found on the property listing on [carterjonas.co.uk](http://carterjonas.co.uk) or a separately available material information sheet, and we would advise you to confirm the details of any material information prior to any offer being submitted. You should not assume that the property has all necessary planning, building regulations or other consents and Carter Jonas has not tested any services, facilities, or equipment. Any measurements and distances given are approximate only. Where Carter Jonas has been provided with a floorplan by a third party, we cannot guarantee that the floorplan has been measured in accordance with IPMS. Purchasers or prospective tenants must satisfy themselves of all of the aforementioned by independent inspection or otherwise. Our images only represent part of the property as it appeared at the time they were taken and do not represent the furnishings included; these are confirmed in a separate inventory. If you require further information, please contact us. \*Administration fees may apply depending on tenancy type. Please contact your local branch for this information.