



MANCHESTER STREET, MARYLEBONE, W1U
£692 per week*

Carter Jonas

FLAT 5, MANCHESTER STREET, MARYLEBONE, LONDON, W1U 7LQ

- Complimentary membership to Portman Concierge.
- The property is professionally managed by The Portman Estate.
- Open plan kitchen and reception
- One double bedroom
- Bathroom with shower
- Third Floor
- Unfurnished (or furnished at separate cost)

THE PROPERTY

This inviting apartment features a open-plan layout that seamlessly integrates the kitchen and reception room, adorned with elegant wood floors. The contemporary kitchen is fully equipped with high-quality appliances.

The apartment includes a double bedroom alongside a sleek shower room that offers both style and convenience. Situated on the third floor building on Manchester Street, this residence combines comfort with a desirable urban location.

The property is professionally managed by The Portman Estate.

Available for long term rental on an unfurnished basis, or furnished (at separate cost)

Complimentary membership to Portman Concierge.

Manchester Street is conveniently located in the heart of Marylebone Village, just off Manchester Square. It is only a short distance from the restaurants, shops, and attractions of Marylebone and the West End, as well as outdoor spaces of Hyde Park, Regent's Park, and Manchester Square. Transport links are excellent from nearby Bond Street (about 0.5 mile) and Baker Street (about 0.3 mile) underground stations, as well as Marylebone (about 0.6 mile), Paddington (about 1.1 mile), and Euston (about 1.3 mile) mainline stations.

The Portman Estate's 110 acres of land within Marylebone, London W1, has a rich heritage dating back to the 16th century and is the setting for continual investment in premium residential properties, shops and independent businesses. The Portman Estate includes

Bright and modern third floor apartment on the popular Manchester Street, superbly located for the shops and restaurants of Marylebone High Street, and trendy Chiltern Street.



key places of architectural and historical interest along with a vibrant blend of shops, restaurants, wine-bars, hotels and garden squares.

Holding deposit is 1 week's rent = £692 (at asking price).

Security deposit is 5 weeks rent = £3,460 (at asking price of £692pw).

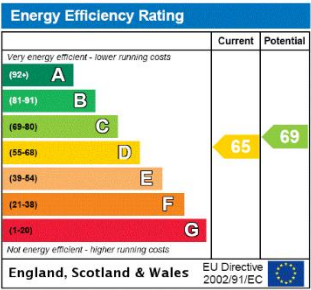
Minimum term 12 months

Council Tax Band E

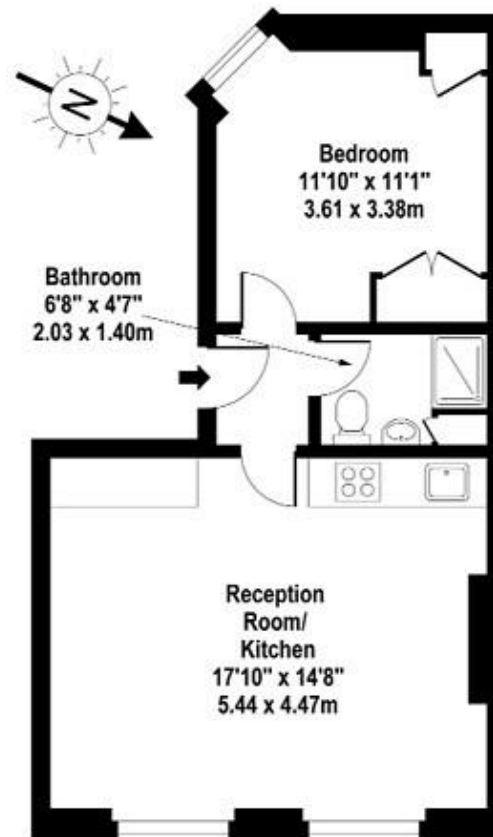
For the latest information on broadband and mobile coverage, please visit /checker.ofcom for the most up-to-date details.

ADDITIONAL INFORMATION

Offers	Available for a minimum term of 12 months longer terms will be considered
Viewing	Strictly by appointment
Local Authority	Westminster City Council - Council Tax Band E



MANCHESTER STREET



Third Floor

Approx Gross Internal Area 442 Sq Ft - 41.06 Sq M

For Illustration Purposes Only - Not To Scale

T: 020 7486 8866

37 New Cavendish Street, London, W1G 9TL

E: marylebone.lettings@carterjonas.co.uk

A member of



Exclusive UK affiliate of

CHRISTIE'S
INTERNATIONAL REAL ESTATE

IMPORTANT INFORMATION

These particulars are for general information purposes only and do not represent an offer or contract or part of one. Carter Jonas or anyone in their employment has made every attempt to ensure that the particulars and other information provided are as accurate as possible and they are not intended to amount to advice on which you should rely as being factually accurate. Full information which may be relevant to your decision regarding the property can be found on the property listing on carterjonas.co.uk or a separately available material information sheet, and we would advise you to confirm the details of any material information prior to any offer being submitted. You should not assume that the property has all necessary planning, building regulations or other consents and Carter Jonas has not tested any services, facilities, or equipment. Any measurements and distances given are approximate only. Where Carter Jonas has been provided with a floorplan by a third party, we cannot guarantee that the floorplan has been measured in accordance with IPMS. Purchasers or prospective tenants must satisfy themselves of all of the aforementioned by independent inspection or otherwise. Our images only represent part of the property as it appeared at the time they were taken and do not represent the furnishings included; these are confirmed in a separate inventory. If you require further information, please contact us. *Administration fees may apply depending on tenancy type. Please contact your local branch for this information.