



**GREAT CUMBERLAND PLACE, MARYLEBONE, W1H**  
£692 per week\*

**Carter Jonas**



---

## **FLAT 1, GREAT CUMBERLAND PLACE, MARYLEBONE, LONDON, W1H 7TX**

- Completely refurbished
- Double bedroom with storage
- Modern bathroom
- Reception room with plenty of light
- Stylish kitchen
- Wood floors throughout
- Complimentary subscription to Portman Concierge

### **THE PROPERTY**

The apartment has been completely refurbished and is situated on the lower ground floor of a period conversion and benefits from a modern fully fitted kitchen in a semi open plan style to the reception room, a good-sized bedroom with fitted wardrobes, and one modern bathroom.

Available for long term rental on an unfurnished basis. Rental furniture is available at separate cost.

Professionally managed by the Portman Estate.

Complimentary membership to Portman Concierge.

Great Cumberland Place is in London City Centre, a walkable location with fantastic shopping with Oxford Street in proximity. Cultural landmarks including the British Museum and Natural History Museum are close by and accessible by rail. The distance between Bond Street Underground Station and Marble Arch Tube Station approximately 9-minute walk.

The Portman Estate's 110 acres of land within Marylebone, London W1, has a rich heritage dating back to the 16th century and is the setting for continual investment in premium residential properties, shops and independent businesses. The Portman Estate includes key places of architectural and historical interest along with a vibrant blend of shops, including Portman Village, restaurants, wine-bars, hotels and garden squares - a perfect mix of leisure opportunities for residents in the heart of London's West End.

## **Newly refurbished one bedroom apartment, set within the heart of Marylebone in a period building near Marble Arch.**





Holding deposit is 1 week's rent = £692 (at asking price)

Security deposit is 5 week's rent = £3,460 (at asking price of £692pw)

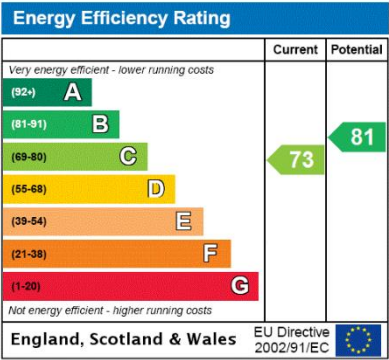
Minimum term - 12 months

Council Tax Band - E

For the latest information on broadband and mobile coverage, please visit /checker. Ofcom for the most up-to-date details

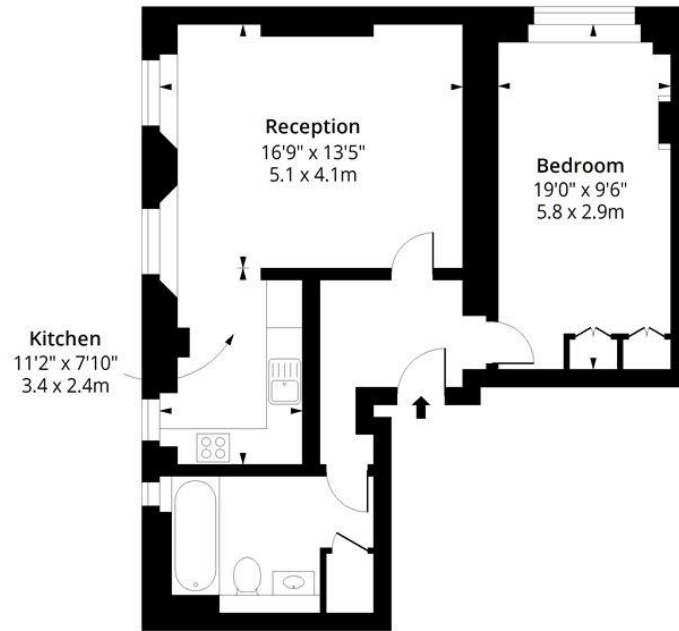
ADDITIONAL INFORMATION

Offers	Available for a minimum term of 12 months longer terms will be considered
Viewing	Strictly by appointment
Local Authority	Westminster City Council - Council Tax Band E



# Great Cumberland Place, W1H

Approx. Gross Internal Area 698 Sq Ft - 64.84 Sq M



## Lower Ground Floor

Floor Area 698 Sq Ft - 64.84 Sq M



Measured according to RICS IPMS2. Floor plan is for illustrative purposes only and is not to scale. Every attempt has been made to ensure the accuracy of the floor plan shown, however all measurements, fixtures, fittings and data shown are an approximate interpretation for illustrative purposes only. 1 sq m = 10.76 sq feet.

lpaplus.com

Date: 21/2/2025



**T: 020 7486 8866**

37 New Cavendish Street, London, W1G 9TL

E: marylebone.lettings@carterjonas.co.uk

A member of



*Exclusive UK affiliate of*

**CHRISTIE'S**  
INTERNATIONAL REAL ESTATE

Classification L2 - Business Data

## IMPORTANT INFORMATION

These particulars are for general information purposes only and do not represent an offer or contract or part of one. Carter Jonas or anyone in their employment has made every attempt to ensure that the particulars and other information provided are as accurate as possible and they are not intended to amount to advice on which you should rely as being factually accurate. Full information which may be relevant to your decision regarding the property can be found on the property listing on [carterjonas.co.uk](http://carterjonas.co.uk) or a separately available material information sheet, and we would advise you to confirm the details of any material information prior to any offer being submitted. You should not assume that the property has all necessary planning, building regulations or other consents and Carter Jonas has not tested any services, facilities, or equipment. Any measurements and distances given are approximate only. Where Carter Jonas has been provided with a floorplan by a third party, we cannot guarantee that the floorplan has been measured in accordance with IPMS. Purchasers or prospective tenants must satisfy themselves of all of the aforementioned by independent inspection or otherwise. Our images only represent part of the property as it appeared at the time they were taken and do not represent the furnishings included; these are confirmed in a separate inventory. If you require further information, please contact us. \*Administration fees may apply depending on tenancy type. Please contact your local branch for this information.