



NOTTINGHAM PLACE, MARYLEBONE, W1U
£1,050 per week*

Carter Jonas

FLAT 3, NOTTINGHAM PLACE, MARYLEBONE, LONDON, W1U 5LH

- Two spacious bedrooms
- Reception room with large windows
- Charming Fireplace
- Fully Fitted sperate kitchen
- Modern Bathroom
- Located on Nottingham Place

THE PROPERTY

A bright two-bedroom apartment located on the second floor of an esteemed period building in the heart of Marylebone. The property features two spacious bedrooms, a sizable reception room complete with a charming fireplace and hardwood flooring throughout. Additionally, it boasts a contemporary bathroom and a fully equipped bright kitchen.

Nottingham Street is a charming, tree-lined street in the heart of Marylebone. Known for its picturesque Georgian architecture and peaceful atmosphere, it is home to a mix of residential properties and small businesses, including cafes, boutiques, and art galleries. The street is within easy walking distance of popular attractions like Regent's Park and Oxford Street. Baker Street station is conveniently located approximately 0.4 miles and Bond Street station approximately 0.6 miles.

Holding deposit is 1 week's rent = £1,050 (at asking price)

Security deposit is 6 week's rent = £6,300 (at asking price £1,050pw)

Minimum Term 12 months

Council Tax Band G

For the latest information on broadband and mobile coverage, please visit [/checker.ofcom](https://checker.ofcom.gov.uk/) for the most up-to-date details.

A vibrant two-bedroom apartment located on the second floor of a distinguished period building in the centre of Marylebone.

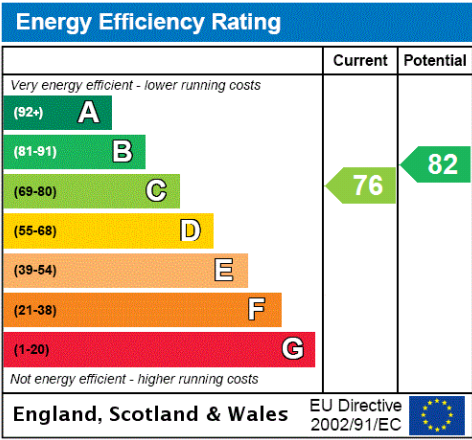


ADDITIONAL INFORMATION

Offers Available for a minimum term of 12 months longer terms will be considered

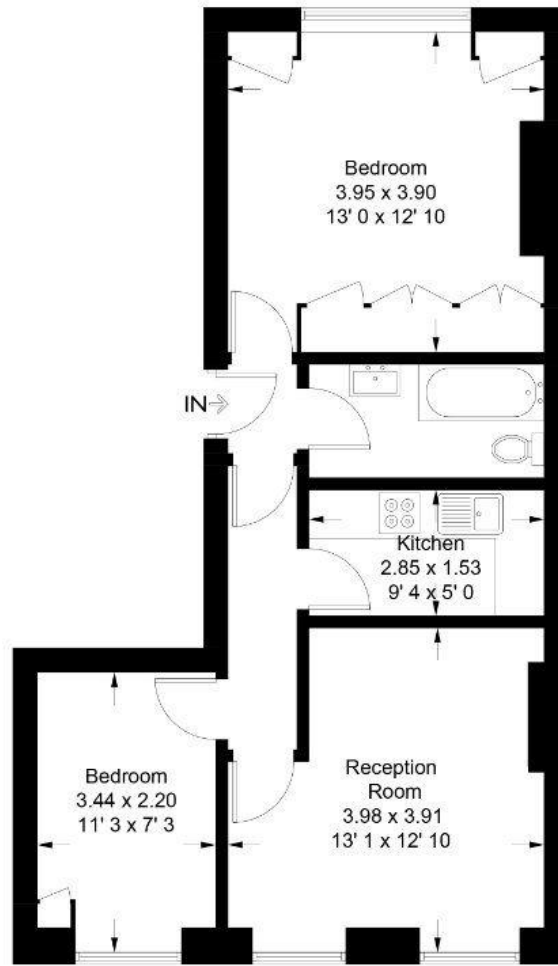
Viewing Strictly by appointment

Local Authority Westminster City Council - Council Tax Band G



Nottingham Place

Approximate Gross Internal Area = 575 sq ft / 53.4 sq m



First Floor

Not to scale, for guidance only and must not be relied upon as a statement of fact
All measurements and areas are approximate only and have been prepared in accordance with the current edition of the RICS Code of Measuring Practice

T: 020 7486 8866

37 New Cavendish Street, London, W1G 9TL

E: marylebone.lettings@carterjonas.co.uk

A member of



Exclusive UK affiliate of

CHRISTIE'S
INTERNATIONAL REAL ESTATE

Classification L2 - Business Data



IMPORTANT INFORMATION

These particulars are for general information purposes only and do not represent an offer or contract or part of one. Carter Jonas or anyone in their employment has made every attempt to ensure that the particulars and other information provided are as accurate as possible and they are not intended to amount to advice on which you should rely as being factually accurate. Full information which may be relevant to your decision regarding the property can be found on the property listing on carterjonas.co.uk or a separately available material information sheet, and we would advise you to confirm the details of any material information prior to any offer being submitted. You should not assume that the property has all necessary planning, building regulations or other consents and Carter Jonas has not tested any services, facilities, or equipment. Any measurements and distances given are approximate only. Where Carter Jonas has been provided with a floorplan by a third party, we cannot guarantee that the floorplan has been measured in accordance with IPMS. Purchasers or prospective tenants must satisfy themselves of all of the aforementioned by independent inspection or otherwise. Our images only represent part of the property as it appeared at the time they were taken and do not represent the furnishings included; these are confirmed in a separate inventory. If you require further information, please contact us. *Administration fees may apply depending on tenancy type. Please contact your local branch for this information.