



SEYMOUR STREET, MARYLEBONE, W1H
£750 per week*

Carter Jonas

FLAT 4, SEYMOUR STREET, MARYLEBONE, LONDON, W1H 7JD

- Professionally managed by The Portman Estate.
- One Bedroom
- Reception Room
- Bathroom
- Flat/Apartment
- Roof Terrace
- Long Let
- Unfurnished (or furnished at separate cost)

THE PROPERTY

The apartment features an open plan kitchen/reception with wood floors, double bedroom situated to the rear, one bathroom and good size private terrace.

The property is professionally managed by The Portman Estate.

Available for long term rental on an unfurnished basis, or furnished (at separate cost)

Seymour Street is located on the luscious Hyde Park Estate, close to the north of Hyde Park, one of the most famous urban parks worldwide. Mayfair and Knightsbridge are both within a leisurely stroll, as are the West End, Marylebone, Portman Village, the artisan clothing, and food stores of Connaught Street, and many more locations. It is conveniently close to Paddington stations, which are home to the Heathrow Express, National Rail, Circle, District, Bakerloo, Crossrail, and Hammersmith & City Lines, and Marble Arch Underground Station, which is dedicated to the Central line and is just 0.2 miles away.

The Portman Estate is a prestigious property portfolio located in the heart of central London, covering 110 acres of prime real estate in Marylebone. Renting through The Portman Estate comes with the advantage of an in-house property management team, providing responsive, hands-on service to ensure residents' needs are met quickly and efficiently. This dedicated team helps maintain the quality of living, handling everything from routine maintenance to emergency repairs, making the rental experience hassle-free.

Holding deposit is 1 week's rent = £750 (at asking price)

Beautiful self-contained one bedroom apartment with private roof terrace situated on the third floor of an attractive and well maintained period building.



Security deposit is 5 week's rent = £3,750 (at asking price £750pw)

Minimum Term 12 months

Council Tax Band D

For the latest information on broadband and mobile coverage, please visit [/checker.ofcom](http://checker.ofcom) for the most up-to-date details.

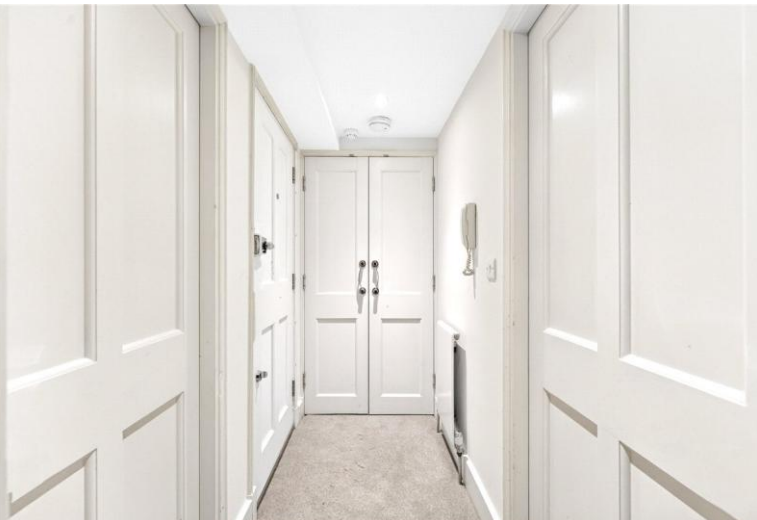
ADDITIONAL INFORMATION

Offers Available for a minimum term of 12 months longer terms will be considered

Viewing Strictly by appointment

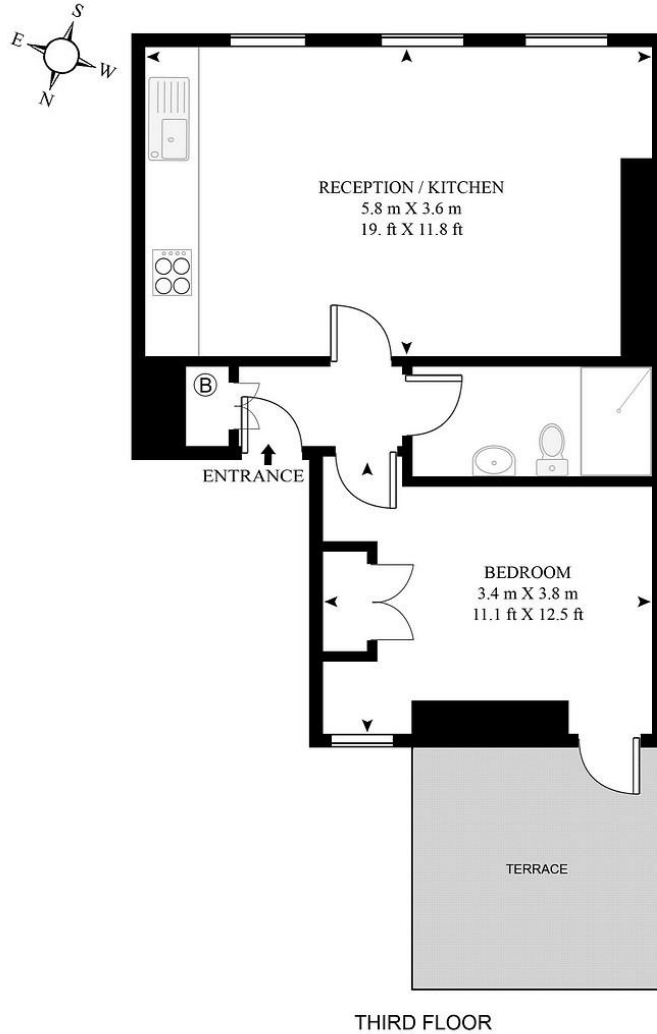
Local Authority City of Westminster - Selective Licences - Council Tax Band D

Energy Efficiency Rating		Current	Potential
Very energy efficient - lower running costs			
(92+)	A		
(81-91)	B		
(69-80)	C	74	79
(55-68)	D		
(39-54)	E		
(21-38)	F		
(1-20)	G		
Not energy efficient - higher running costs			
England, Scotland & Wales		EU Directive 2002/91/EC	



SEYMOUR STREET

APPROXIMATE GROSS INTERNAL FLOOR AREA 430 SQ.FT (40 SQ.M)



HDVA

This floor plan has been defined by the RICS Code of Measurement. This floor plan and all others are for approximate representative purposes only and upon usage is agreed to as such by the client.
WWW: hdvirtualart.com | TEL: 0207 923 7300 | EMAIL: info@hdvirtualart.com

T: 020 7486 8866

37 New Cavendish Street, London, W1G 9TL

E: marylebone.lettings@carterjonas.co.uk

A member of



Exclusive UK affiliate of

CHRISTIE'S
INTERNATIONAL REAL ESTATE

Classification L2 - Business Data



IMPORTANT INFORMATION

These particulars are for general information purposes only and do not represent an offer or contract or part of one. Carter Jonas or anyone in their employment has made every attempt to ensure that the particulars and other information provided are as accurate as possible and they are not intended to amount to advice on which you should rely as being factually accurate. Full information which may be relevant to your decision regarding the property can be found on the property listing on carterjonas.co.uk or a separately available material information sheet, and we would advise you to confirm the details of any material information prior to any offer being submitted. You should not assume that the property has all necessary planning, building regulations or other consents and Carter Jonas has not tested any services, facilities, or equipment. Any measurements and distances given are approximate only. Where Carter Jonas has been provided with a floorplan by a third party, we cannot guarantee that the floorplan has been measured in accordance with IPMS. Purchasers or prospective tenants must satisfy themselves of all of the aforementioned by independent inspection or otherwise. Our images only represent part of the property as it appeared at the time they were taken and do not represent the furnishings included; these are confirmed in a separate inventory. If you require further information, please contact us. *Administration fees may apply depending on tenancy type. Please contact your local branch for this information.