



**HIGH STREET, MARLBOROUGH, SN8**  
£800 per month\*

**Carter Jonas**



A one bedroom second floor apartment situated in the heart of Marlborough High Street. **\*\*INITIAL SIX MONTH TENANCY ONLY\*\***

This one bedroom flat is situated on the second floor and comprises of an entrance hallway, an open plan reception room with kitchen including built in washer dryer, fridge, oven and hob. The spacious bedroom has a modern ensuite bathroom with enclosed shower.

This Property is centrally located in the beautiful market town of Marlborough on the High Street. Marlborough is a thriving and expanding town with excellent local shopping including some of the major retailers.

Council Tax Band: A (Wiltshire Council Website for current cost) / EPC: D

NO ALLOCATED PARKING.

Internet & Mobile: Further information on availability and speeds can be found on the Ofcom website. Utility Services: Mains water and drainage, electric heating and hot water, mains electric.

At a rent of £800 per calendar month: Holding deposit of 1 week's rent £184.00 Security deposit of 5 weeks rent £923.00

- Council Tax Band = A
- Deposit Required = £923.00
- Long Let
- Six Month Tenancy Only
- One Bedroom
- Open Plan Living Room and Kitchen
- Second Floor
- High Street Location
- No Pets
- EPC = D

Energy Efficiency Rating		
	Current	Potential
Very energy efficient - lower running costs		
(92-100) <b>A</b>		
(81-91) <b>B</b>		
(69-80) <b>C</b>		
(55-68) <b>D</b>		
(49-54) <b>E</b>		
(39-48) <b>F</b>		
(21-38) <b>G</b>		
Not energy efficient - higher running costs		
England, Scotland & Wales	EU Directive 2002/91/EC	

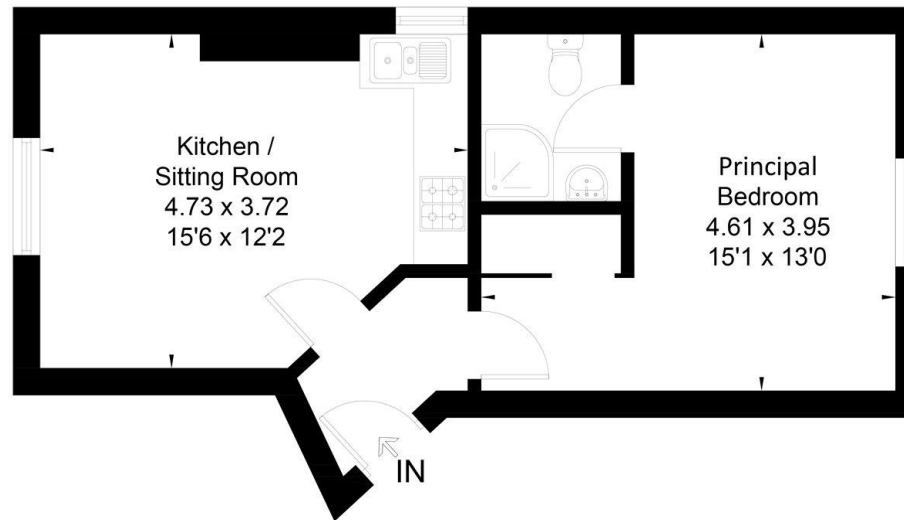
**Marlborough Lettings 01672 519700**

marlborough@carterjonas.co.uk

93-94 High Street, Marlborough, Wiltshire, SN8 1HD



High Street, Marlborough, SN8  
Approximate Area = 405 sq ft / 37.6 sq m



This floor plan has been drawn in accordance with RICS Property Measurement 2nd edition. All measurements, including the floor area, are approximate and for illustrative purposes only. @fourwalls-group.com #70194



Exclusive UK affiliate of

**CHRISTIE'S**  
INTERNATIONAL REAL ESTATE

Classification L2 - Business Data

## IMPORTANT INFORMATION

These particulars are for general information purposes only and do not represent an offer or contract or part of one. Carter Jonas or anyone in their employment has made every attempt to ensure that the particulars and other information provided are as accurate as possible and they are not intended to amount to advice on which you should rely as being factually accurate. Full information which may be relevant to your decision regarding the property can be found on the property listing on [carterjonas.co.uk](http://carterjonas.co.uk) or a separately available material information sheet, and we would advise you to confirm the details of any material information prior to any offer being submitted. You should not assume that the property has all necessary planning, building regulations or other consents and Carter Jonas has not tested any services, facilities, or equipment. Any measurements and distances given are approximate only. Where Carter Jonas has been provided with a floorplan by a third party, we cannot guarantee that the floorplan has been measured in accordance with IPMS. Purchasers or prospective tenants must satisfy themselves of all of the aforementioned by independent inspection or otherwise. Our images only represent part of the property as it appeared at the time they were taken and do not represent the furnishings included; these are confirmed in a separate inventory. If you require further information, please contact us. \*Administration fees may apply depending on tenancy type. Please contact your local branch for this information.