



Iffley Road
Oxford

Carter Jonas

244 IFFLEY ROAD OXFORD OX4 1SE

Ideal location for schools & city centre
6 bedrooms & 3 bathrooms
Period features
90' SW facing rear garden & off-street parking

DESCRIPTION

This substantial semi-detached Victorian house lies within the St Clements and Iffley Road conservation area and until recently has been used as a boarding house (use class C1) providing short stay accommodation for a charity. Planning permission has recently been passed for change of use back to a residential dwelling. The property has well planned and spacious accommodation extending to 2200 sq. ft, arranged over three floors and retains many elements of its original character. The property will provide 6 bedrooms and has potential to extend further subject to the necessary consents. There are walled south westerly gardens to the rear extending to approximately 90 feet and the planning permission allows for an off street car park space to the front.

LOCATION

The property is located in the sought-after Iffley Fields area of Oxford, just over a mile from the city centre. The area provides a very good range of local shops, pubs, and restaurants and within walking distance are two expanses of open space adjacent to the River Thames, Christ Church meadow and Astons Eyot. There is a wide choice of schooling within Oxford and the property is located a short distance from Magdalen College School.

PLANNING PERMISSION

Planning permission for 244 & 246 was granted by Oxford City Council under reference 24/00319/FUL on the 5th April 2024 for the Change of use from Boarding House (Use Class C1) and conversion to create 2 x 6 bed dwelling houses (Use Class C3). Removal of 1 window and 1 door and insertion of 3 rooflights to side elevation of 246 Iffley Road. Alterations to parking provision.

A THREE STOREY PERIOD SEMI DETACHED HOUSE CURRENTLY USED AS STAFF ACCOMMODATION (C1 CLASS USE) WITH PLANNING PERMISSION FOR CHANGE OF USE TO A SIX BEDROOM HOUSE.



The change of use is subject to a number of conditions which can be provided on request.

Currently, this property and the adjoining semi detached house are being used as one property. As part of the sale, the vendor will divide the house back into two properties and separate any services.

FURTHER INFORMATION

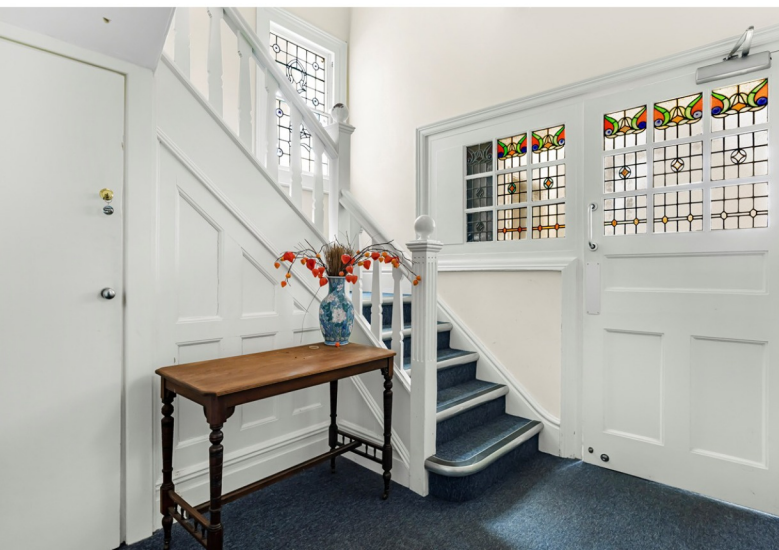
All mains services are connected.
Council tax band H (together with the adjoining property).

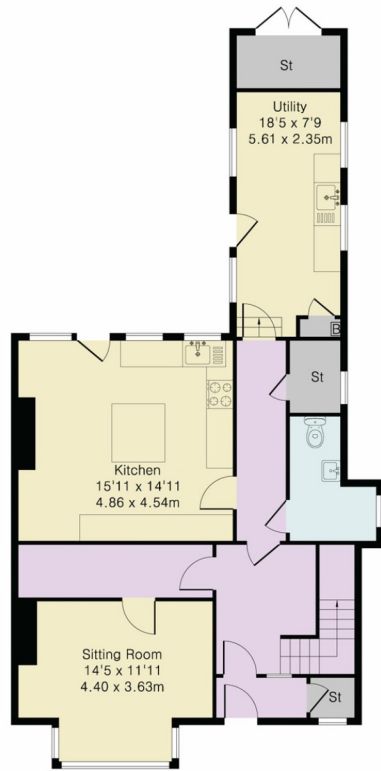
According to Ofcom, ultrafast broadband is available at this location and there is likely to be outdoor mobile coverage with limited indoor coverage.
Located in the St Clements and Iffley Fields Conservation area.

ADDITIONAL INFORMATION

Viewing: Strictly by appointment through the selling agents Carter Jonas - T: 01865 511444

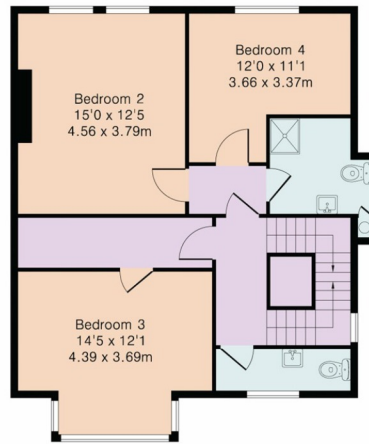
Directions: OX4 1SE



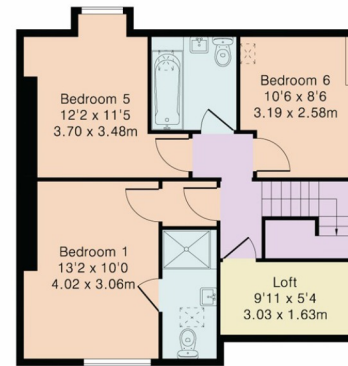


Ground Floor

Approximate Gross Internal Area 2200 sq ft – 204 sq m
 Ground Floor Area 896 sq ft – 83 sq m
 First Floor Area 729 sq ft – 68 sq m
 Second Floor Area 575 sq ft – 53 sq m



First Floor



Second Floor



Although Pink Plan Ltd ensures the highest level of accuracy, measurements of doors, windows and rooms are approximate and no responsibility is taken for error, omission or misstatement. These plans are for representation purposes only as defined by RICS code of measuring practise. No guarantee is given on total square footage of the property within this plan. The figure icon is for initial guidance only and should not be relied on as a basis of valuation.

Oxford 01865 511444

oxford@carterjonas.co.uk

Mayfield House, 256 Banbury Road, Oxford. OX2 7DE

carterjonas.co.uk

Offices throughout the UK



Carter Jonas

IMPORTANT INFORMATION

These particulars are for general information purposes only and do not represent an offer or contract or part of one. Carter Jonas or anyone in their employment has made every attempt to ensure that the particulars and other information provided are as accurate as possible and they are not intended to amount to advice on which you should rely as being factually accurate. Full information which may be relevant to your decision regarding the property can be found on the property listing on carterjonas.co.uk or, (including off market properties) on the brochure or a separately available material information sheet. We would advise you to confirm the details of any material information prior to any offer being submitted. You should not assume that the property has all necessary planning, building regulations or other consents and Carter Jonas has not tested any services, facilities or equipment. Any measurements and distances given are approximate only. Where Carter Jonas has been provided with a floorplan by a third party, we cannot guarantee that the floorplan has been measured in accordance with IPMS. Purchasers must satisfy themselves of all of the aforementioned by independent inspection or otherwise. Our images only represent part of the property as it appeared at the time they were taken and do not represent the furnishings included; these are confirmed in a separate inventory. If you require further information, please contact us.