



MEASHAM ROAD, OAKTHORPE, DE12
£1,950 per month*

Carter Jonas

MEASHAM ROAD, OAKTHORPE, DE12

A 4 bedroom detached house with private garden with additional land available.

Accommodation comprises - GF: W.C, Kitchen, Dining Area, Living Room, Office, Utility, Conservatory. FF: Landing, four-bedrooms (one ensuite, one with W.C) and main bathroom.

Externally, is ample off-street parking and a double garage (which has been converted into offices) and a private rear garden.

The Land is approximately 9.94 acres (4.02 Hectares) and includes nine stables split across three stables blocks, four stores and a menage. The Land is Grade 4 slowly permeable seasonally wet acid loamy and clayey soils, would be suited to an equestrian use. The land is at an additional monthly cost of £350 pcm.

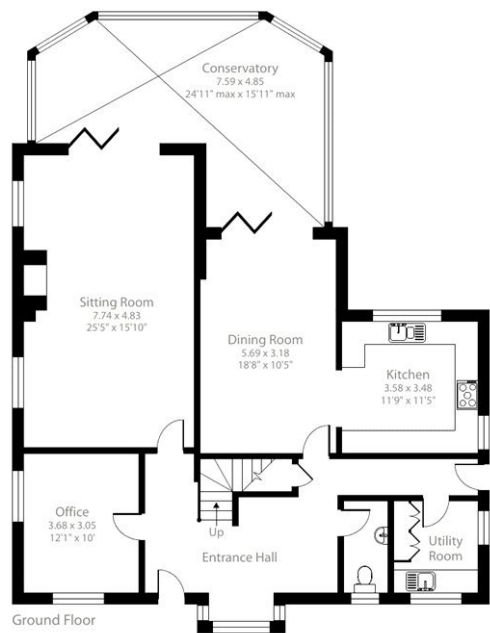
The Land is split into four parcels with a separate yard and stable area.

- No access to Loft. No white goods. Mains electricity, water and
- Council Tax = G
 - Deposit Required = £2,250.00
 - Minimum term 12 months
 - 4 bedrooms
 - 2 Bathrooms
 - 2 Separate WC's
 - Kitchen
 - Utility
 - Dining Room
 - Sitting Room
 - Office
 - Conservatory
 - Private Garden
 - External Office Building
 - EPC = D

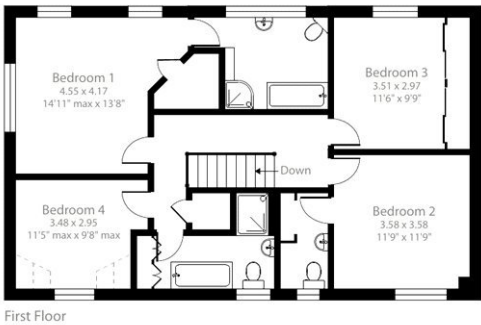
Energy Efficiency Rating		
Very energy efficient - lower running costs	Current	Potential
(92-100) A		83
(81-91) B		
(69-80) C		
(55-68) D	60	
(39-54) E		
(21-38) F		
(1-20) G		
Not energy efficient - higher running costs		
England, Scotland & Wales		
EU Directive 2002/91/EC		

Measham Road, Oakthorpe, Swadlincote, DE12

Approximate Area = 2537 sq ft / 235.7 sq m
Limited Use Area(s) = 13 sq ft / 1.2 sq m
Total = 2550 sq ft / 236.9 sq m
For identification only - Not to scale



Denotes restricted head height



Floor plan produced in accordance with RICS Property Measurement 2nd Edition, Incorporating International Property Measurement Standards (IPMS2 Residential). © nclhcom 2025. Produced for Carter Jonas. REF: 1228252



Oxford Lettings 01865 511444

oxfordresilettings@carterjonas.co.uk

Mayfield House, 256 Banbury Road, Oxford, Oxfordshire, OX2 7DE



Exclusive UK affiliate of

CHRISTIE'S
INTERNATIONAL REAL ESTATE

Classification L2 - Business Data

IMPORTANT INFORMATION

These particulars are for general information purposes only and do not represent an offer or contract or part of one. Carter Jonas or anyone in their employment has made every attempt to ensure that the particulars and other information provided are as accurate as possible and they are not intended to amount to advice on which you should rely as being factually accurate. Full information which may be relevant to your decision regarding the property can be found on the property listing on carterjonas.co.uk or a separately available material information sheet, and we would advise you to confirm the details of any material information prior to any offer being submitted. You should not assume that the property has all necessary planning, building regulations or other consents and Carter Jonas has not tested any services, facilities, or equipment. Any measurements and distances given are approximate only. Where Carter Jonas has been provided with a floorplan by a third party, we cannot guarantee that the floorplan has been measured in accordance with IPMS. Purchasers or prospective tenants must satisfy themselves of all of the aforementioned by independent inspection or otherwise. Our images only represent part of the property as it appeared at the time they were taken and do not represent the furnishings included; these are confirmed in a separate inventory. If you require further information, please contact us. *Administration fees may apply depending on tenancy type. Please contact your local branch for this information.