



**CROXDEN WAY, DAVENTRY, NN11**  
£825 per month\*

**Carter Jonas**

---

## **CROXDEN WAY, DAVENTRY, NN11 2PD**

**A Modern Ground Floor One Bedroom apartment on  
the Monksmoor Park Development.**

- Professionally managed
- Corporate Landlord
- Flexible long term tenancies
- Parking

### **THE PROPERTY**

Modern one bedroom apartment positioned on the popular Monksmoor Park development in Daventry.

Accommodation comprising: Entrance Hall, Open Plan Kitchen/Living Area, Bedroom and Bathroom. Allocated Parking.

Available 21st April for an initial 12 month tenancy. Unfurnished.

Council Tax Band C (please check West Northamptonshire Council Website for current cost)

EPC Rating - B

No access to Loft. Mains gas, electricity, water and drainage. GCH Heating.

Flood Risk – Very Low

Internet & Mobile: Further information on availability and speeds can be found at [checker.ofcom.org.uk](http://checker.ofcom.org.uk)

Holding deposit = 1 weeks rent of £190.00

Deposit is 5 weeks rent (£825 pcm = £951.00 deposit)





---

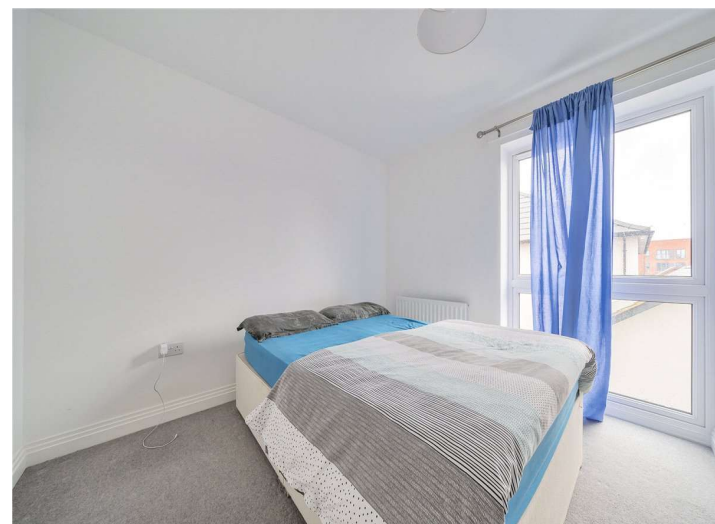
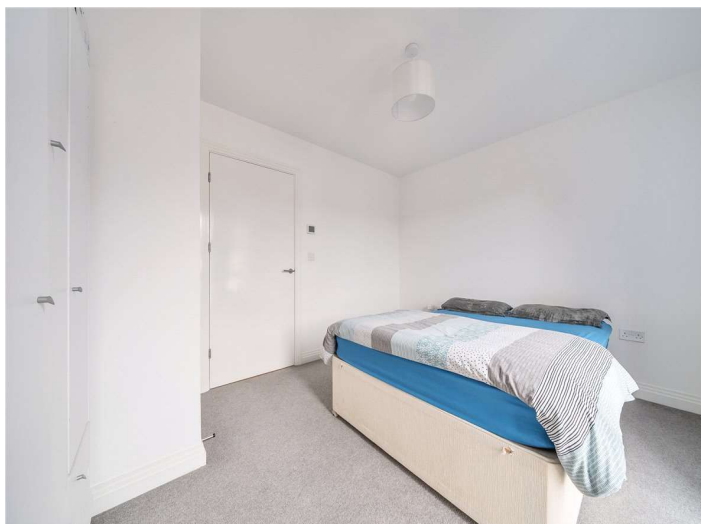
## ADDITIONAL INFORMATION

Offers	Available for a minimum term of 12 months longer terms will be considered
--------	---

Viewing	Strictly by appointment
---------	-------------------------

Local Authority	- Council Tax Band A
-----------------	----------------------

---

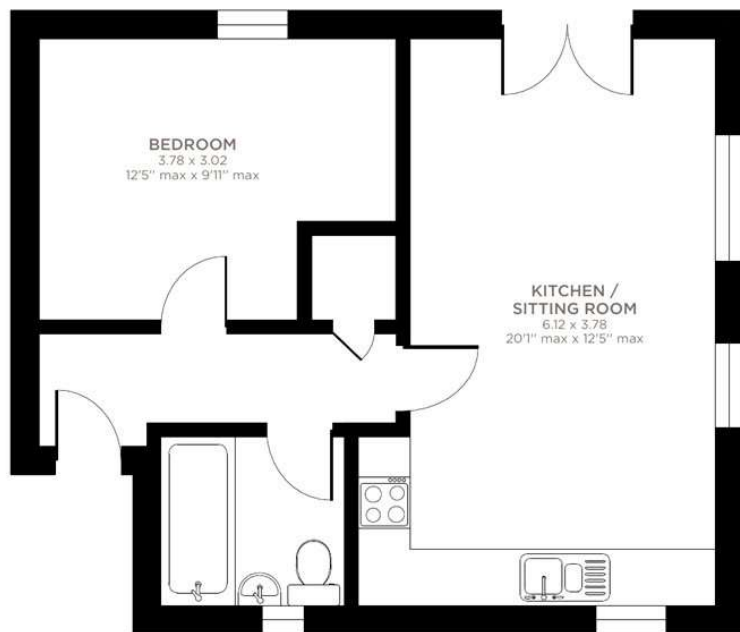




## Croxden Way, Daventry, NN11

Approximate Area = 459 sq ft / 42.6 sq m

For identification only - Not to scale



FIRST FLOOR



Certified  
Property  
Measurer

Floor plan produced in accordance with RICS Property Measurement Standards incorporating International Property Measurement Standards (IPMS2 Residential). © n2cheom 2023.  
Produced for Carter Jonas. REF: 933998

**T: 01865 511444**

Mayfield House, 256 Banbury Road, Oxford, Oxfordshire, OX2 7DE

E: [oxfordresilettings@carterjonas.co.uk](mailto:oxfordresilettings@carterjonas.co.uk)

A member of



*Exclusive UK affiliate of*

**CHRISTIE'S**  
INTERNATIONAL REAL ESTATE

Classification L2 - Business Data



### IMPORTANT INFORMATION

These particulars are for general information purposes only and do not represent an offer or contract or part of one. Carter Jonas or anyone in their employment has made every attempt to ensure that the particulars and other information provided are as accurate as possible and they are not intended to amount to advice on which you should rely as being factually accurate. Full information which may be relevant to your decision regarding the property can be found on the property listing on [carterjonas.co.uk](http://carterjonas.co.uk) or a separately available material information sheet, and we would advise you to confirm the details of any material information prior to any offer being submitted. You should not assume that the property has all necessary planning, building regulations or other consents and Carter Jonas has not tested any services, facilities, or equipment. Any measurements and distances given are approximate only. Where Carter Jonas has been provided with a floorplan by a third party, we cannot guarantee that the floorplan has been measured in accordance with IPMS. Purchasers or prospective tenants must satisfy themselves of all of the aforementioned by independent inspection or otherwise. Our images only represent part of the property as it appeared at the time they were taken and do not represent the furnishings included; these are confirmed in a separate inventory. If you require further information, please contact us. \*Administration fees may apply depending on tenancy type. Please contact your local branch for this information.