



**BAKER STREET, ORSETT, RM16**  
£3,100 per month\*

**Carter Jonas**



---

## **FIELDHOUSE FARM, BAKER STREET, ORSETT, GRAYS, ESSEX, RM16 3LJ**

**A four bedroom detached family home with stables and grazing field situated within the Village of Orsett**

- 4 Bedrooms
- Open Plan Kitchen
- Dining Room
- Sitting Room
- Conservatory
- Family Bathroom
- En suite Shower Room

### **THE PROPERTY**

Accommodation comprises: entrance porch, cloakroom, entrance hall, leading to open plan kitchen/dining room, lounge, further reception room, conservatory and utility room.

To the first floor are four bedrooms, ensuite shower room and separate family bathroom.

Externally, there is off road parking for several vehicles, double garage and enclosed rear garden.

The property also comes with stables and around 4 acres of land suitable for grazing.

Available unfurnished from Mid May for an initial 12 month tenancy.

EPC - C Council Tax Band F - Please see Thurrock Council for current costs.

Pets considered. No access to loft. Mains gas, electricity, water and drainage are connected to the property.

Internet & Mobile: Further information on availability and speeds can be found at [checker.ofcom.org.uk](http://checker.ofcom.org.uk)

Flood Risk - Low

At a rent of £3100 per calendar month.

Holding deposit of 1 week's rent £715

Security deposit of 5 weeks rent £3576



---

## ADDITIONAL INFORMATION

---

Offers	Available for a minimum term of 12 months longer terms will be considered
--------	---

---

Viewing	Strictly by appointment
---------	-------------------------

---

Local Authority	Thurrock Council - Council Tax Band F
-----------------	---------------------------------------

---

Directions	
------------	--

---

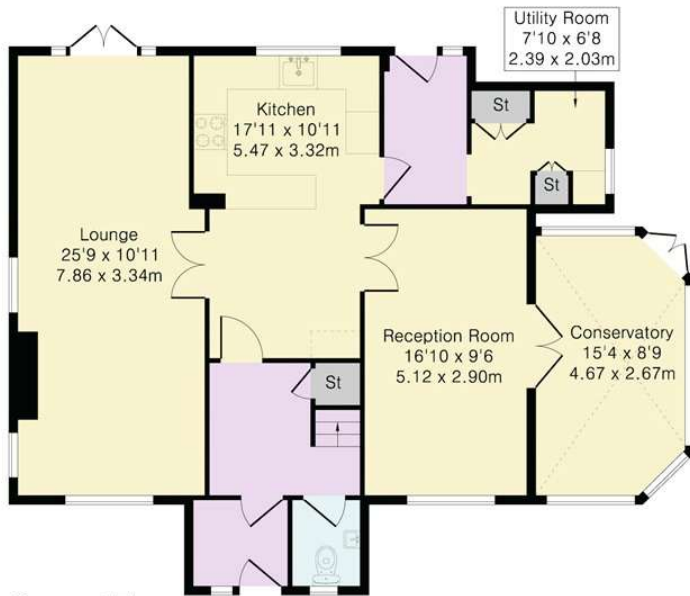




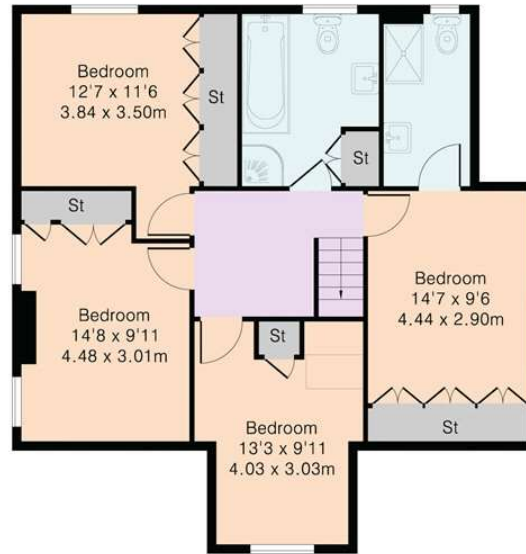
**Approximate Gross Internal Area 1736 sq ft - 161 sq m**

Ground Floor Area 978 sq ft – 91 sq m

First Floor Area 758 sq ft – 70 sq m



Ground Floor



First Floor



Although Pink Plan Ltd ensures the highest level of accuracy, measurements of doors, windows and rooms are approximate and no responsibility is taken for error, omission or misstatement. These plans are for representation purposes only as defined by RICS code of measuring practise. No guarantee is given on total square footage of the property within this plan. The figure icon is for initial guidance only and should not be relied on as a basis of valuation.



**Carter Jonas**

*Exclusive UK affiliate of*

**CHRISTIE'S**  
INTERNATIONAL REAL ESTATE

Classification L2 - Business Data

**T: 01865 511444**

Mayfield House, 256 Banbury Road, Oxford, Oxfordshire, OX2 7DE

E: [oxfordresilettings@carterjonas.co.uk](mailto:oxfordresilettings@carterjonas.co.uk)

A member of



#### IMPORTANT INFORMATION

These particulars are for general information purposes only and do not represent an offer or contract or part of one. Carter Jonas or anyone in their employment has made every attempt to ensure that the particulars and other information provided are as accurate as possible and they are not intended to amount to advice on which you should rely as being factually accurate. Full information which may be relevant to your decision regarding the property can be found on the property listing on [carterjonas.co.uk](http://carterjonas.co.uk) or a separately available material information sheet, and we would advise you to confirm the details of any material information prior to any offer being submitted. You should not assume that the property has all necessary planning, building regulations or other consents and Carter Jonas has not tested any services, facilities, or equipment. Any measurements and distances given are approximate only. Where Carter Jonas has been provided with a floorplan by a third party, we cannot guarantee that the floorplan has been measured in accordance with IPMS. Purchasers or prospective tenants must satisfy themselves of all of the aforementioned by independent inspection or otherwise. Our images only represent part of the property as it appeared at the time they were taken and do not represent the furnishings included; these are confirmed in a separate inventory. If you require further information, please contact us. \*Administration fees may apply depending on tenancy type. Please contact your local branch for this information.