



INGLETHORPE STREET, FULHAM, SW6
£9,500 per month*

Carter Jonas

INGLETHORPE STREET, FULHAM, LONDON, SW6 6NX

- Double fronted
- Semi-detached
- 60 ft double width garden
- 6 bedrooms (2 ensuite)
- 5 bathrooms
- Gym room with sauna & steam room
- Utility room

LOCATION

Inglethorpe Street forms part of the popular Alphabet Streets which run perpendicular to the River Thames. The Thames Path and numerous riverside eateries are close by including The River Café, Crisp and Sam's Riverside. Transport is easily accessible via Hammersmith tube (1.1 miles) and Putney Bridge tube (1 mile) and the area is well served by local bus routes towards central London, Knightsbridge and South Kensington.

THE PROPERTY

A truly one of a kind double fronted period house spanning close to 4,000sqft with a 38ft wide double width garden, and sensational 33ft principal bedroom suite with walk in wardrobe and bathroom, 5 further bedrooms and a large roof terrace with stunning views over the rooftops of Fulham and towards the river. The ground floor comprises of 2 double reception rooms and a family/play room leading from a wider than average central hallway and out to an extended kitchen/dining/family room with patio doors onto the fabulous rear garden. Further benefits include a full utility room, guest WC, private side access and the potential to extend further subject to the usual planning consents.

A magnificent and rare to the market extended, double fronted and semi-detached 6 bedroom house offering close to 4000sqft of living space. EPC D



Holding deposit: 1 week's rent

Security deposit: 6 weeks' rent

Pets considered

Parking: on street via a permit

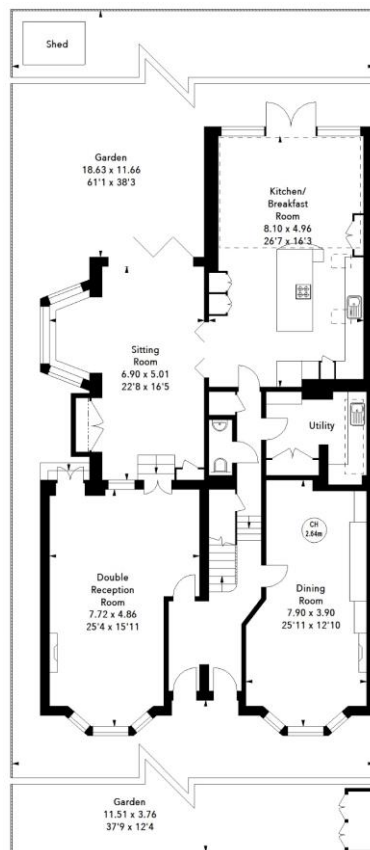
Minimum term: 12 months

Council tax: Band H

ADDITIONAL INFORMATION

Offers	Available for a minimum term of 12 months longer terms will be considered
Viewing	Strictly by appointment
Local Authority	- Council Tax Band H





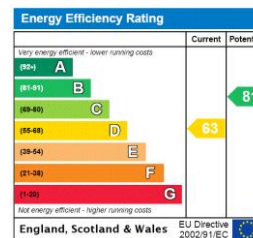
Ground Floor
Approx. 159.79 sq m / 1720 sq ft



First Floor
Approx. 126.62 sq m / 1363 sq ft

Second Floor
Approx. 74.51 sq m / 802 sq ft

The floor plan is not to scale and measurements and areas shown are approximate and therefore should be used for illustrative purposes only. The plan has been prepared in accordance with the RICS code of Measuring Practice and whilst we have confidence in the information produced, it must not be relied on. If there is any aspect of particular importance, you should carry out or commission your own inspection of the property.



T: 020 7751 8898

361 Fulham Palace Road, London, SW6 6TA

E: fulhamlettings@carterjonas.co.uk



Exclusive UK affiliate of

CHRISTIE'S
INTERNATIONAL REAL ESTATE

Classification L2 - Business Data

IMPORTANT INFORMATION

These particulars are for general information purposes only and do not represent an offer or contract or part of one. Carter Jonas or anyone in their employment has made every attempt to ensure that the particulars and other information provided are as accurate as possible and they are not intended to amount to advice on which you should rely as being factually accurate. Full information which may be relevant to your decision regarding the property can be found on the property listing on carterjonas.co.uk or a separately available material information sheet, and we would advise you to confirm the details of any material information prior to any offer being submitted. You should not assume that the property has all necessary planning, building regulations or other consents and Carter Jonas has not tested any services, facilities, or equipment. Any measurements and distances given are approximate only. Where Carter Jonas has been provided with a floorplan by a third party, we cannot guarantee that the floorplan has been measured in accordance with IPMS. Purchasers or prospective tenants must satisfy themselves of all of the aforementioned by independent inspection or otherwise. Our images only represent part of the property as it appeared at the time they were taken and do not represent the furnishings included; these are confirmed in a separate inventory. If you require further information, please contact us. *Administration fees may apply depending on tenancy type. Please contact your local branch for this information.