



**CROOKHAM ROAD, LONDON, SW6**  
£2,600 per month\*

**Carter Jonas**



# CROOKHAM ROAD, LONDON, SW6 4EQ

- One double bedroom
- One bathroom
- Brand new appliances throughout
- Triple glazing at the rear, double glazing at the front
- Underfloor heating throughout
- Oak flooring
- Designated workspace
- Separate, spacious utility room
- Parsons Green underground (District Line) is 0.4 miles
- Full renovation

## LOCATION

Crookham Road is an attractive tree-lined street, centrally located with Parsons Green underground station (District Line, Zone 2) is approximately 400m away. There is also a great selection of shops, cafes, restaurants and amenities close by including a Tesco Express, Sainsbury's and Waitrose at Parsons Green.

## THE PROPERTY

A truly unique opportunity to rent this stunning, one bedroom garden flat in the heart of a leafy street of Parsons Green.

The property benefits from variety of features, such as a private entrance, large private south-facing patio, wide oak flooring with underfloor heating throughout, designated workspace, large separate utility room with LEG washer/dryer, plenty of storage space throughout the flat, plantation shutters in the bedroom, Duravit bathroom, AEG oven and induction hob, boiling water tap, integrated dishwasher and wine fridge.

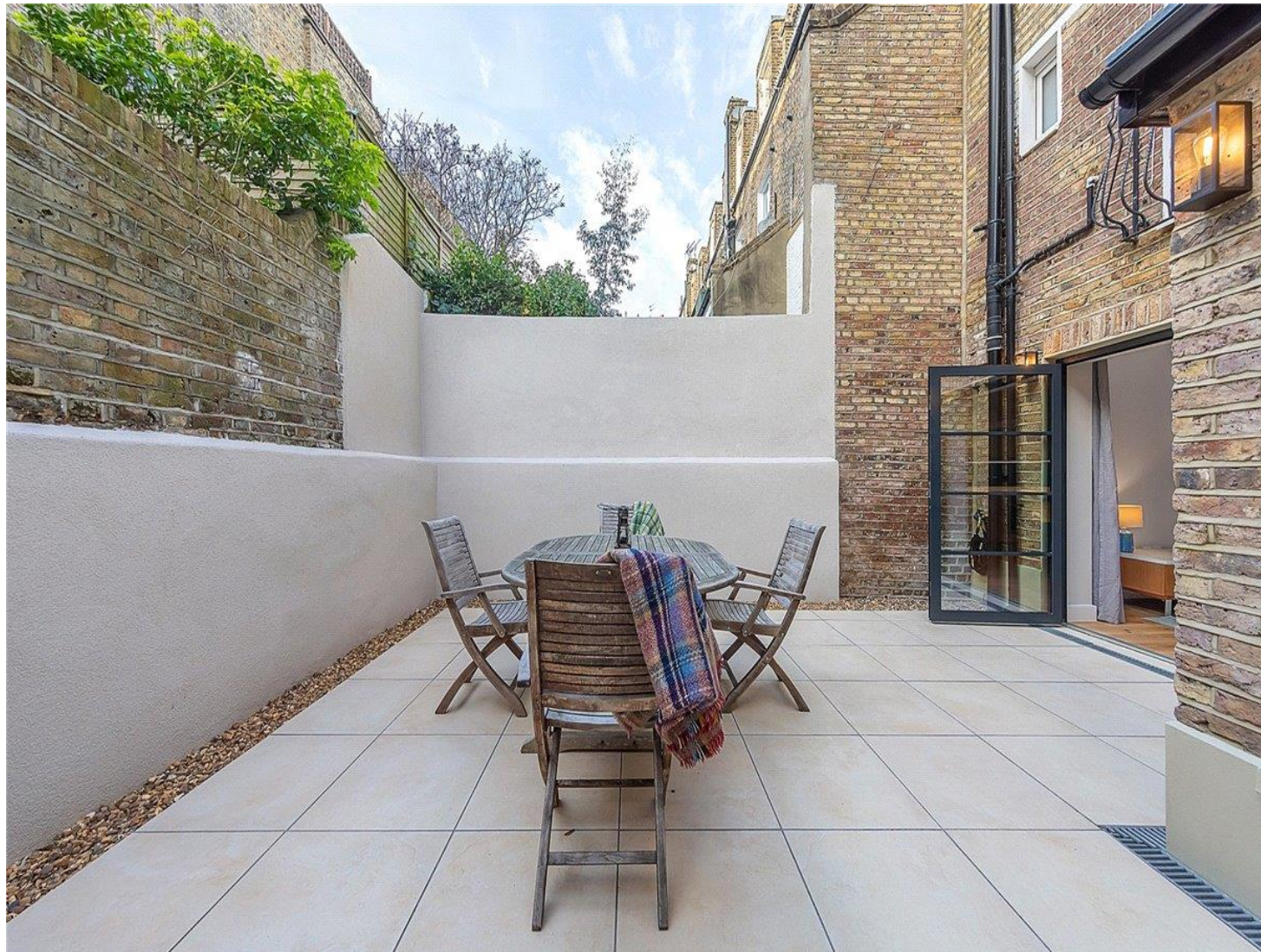
The spacious and low maintenance private patio garden can be accessed from the open-plan kitchen. The insulation of the property is superb, as the front of the property has double glazed sashed windows, whilst the rear has triple aluminium doors and windows.

Offered furnished.

Holding deposit is 1 weeks rent of £519.23

Deposit is 5 weeks rent (£519.23pw=£2,596.15 deposit)

An immaculate and impeccable one bedroom flat in the heart of Parsons Green with private outside space. EPC rating B





**OUTSIDE**

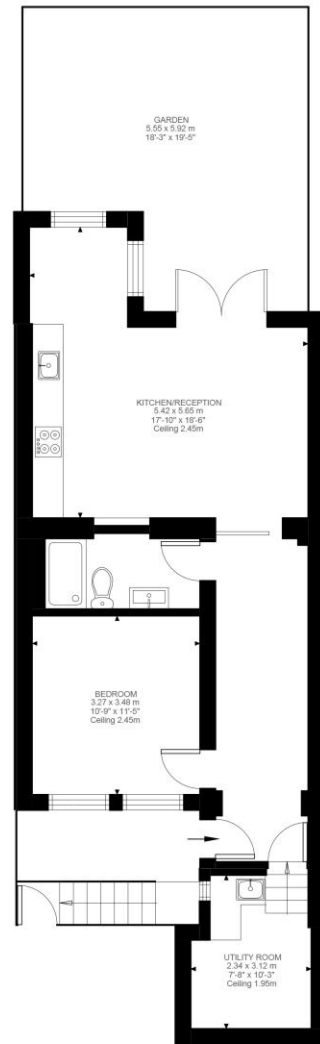
Garden

**ADDITIONAL INFORMATION**

Offers	Available for a minimum term of 12 months longer terms will be considered
Viewing	Strictly by appointment
Local Authority	Hammersmith & Fulham
Parking	Residents permit available



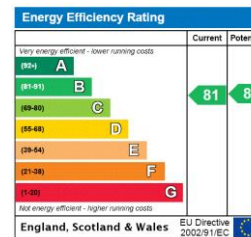




Lower Ground Floor  
673 ft²

Illustration for identification purposes only. Not to scale.  
Floor Plan Drawn According To RICS Guidelines.

Crookham Road, SW  
Approximate Gross Internal Area  
62.52 SQ.M / 673 SQ.FT



**T: 020 7751 8898**

361 Fulham Palace Road, London, SW6 6TA

E: [parsonsgreen.residential.lettings@carterjonas.co.uk](mailto:parsonsgreen.residential.lettings@carterjonas.co.uk)

**carterjonas.co.uk**  
Offices throughout the UK

A member of  
**OnTheMarket.com**  
Classification L2 - Business Data

## IMPORTANT INFORMATION

Our property particulars do not represent an offer or contract, or part of one. The information given is without responsibility on the part of the agents, seller(s) or lessor(s) and you should not rely on the information as being factually accurate about the property, its condition or its value. Neither Carter Jonas LLP nor anyone in its employment or acting on its behalf has authority to make any representation or warranty in relation to this property. We have not carried out a detailed survey, nor tested the services, appliances or fittings at the property. The images shown may only represent part of the property and are as they appeared at the time of being photographed. The areas, measurements and distances are approximate only. Any reference to alterations or use does not mean that any necessary planning permission, building regulation or other consent has been obtained. The VAT position relating to the property may change without notice. Administration fees may apply depending on tenancy type. Please contact your local branch for this information.