



**CLARENCE LANE, LONDON, SW15**  
**£190,000**

**Carter Jonas**

# CLARENCE LANE, LONDON, SW15

A well presented one bedroom flat in this quiet development for the over 55's.

This well appointed one bedroom flat is located on the ground floor. The flat comprises a large reception room leading through to a semi open plan kitchen and doors out to communal gardens. There is a good sized bedroom with built in cupboards and a shower room.

Cedars Court is located close to Roehampton High Street and the open spaces of Richmond Park. There are excellent bus routes to Barnes Station and Putney Bridge.

\*Please note that this property can only be sold to those over the age of 55. \*

Sole Agents. Chain free.

EPC Rating: D

Council Tax Band: C

Please see Wandsworth Council's website for current costs.

## AMENITIES

- One bedroom
- Communal gardens
- Over 55's
- Leasehold

**TENURE** Leasehold

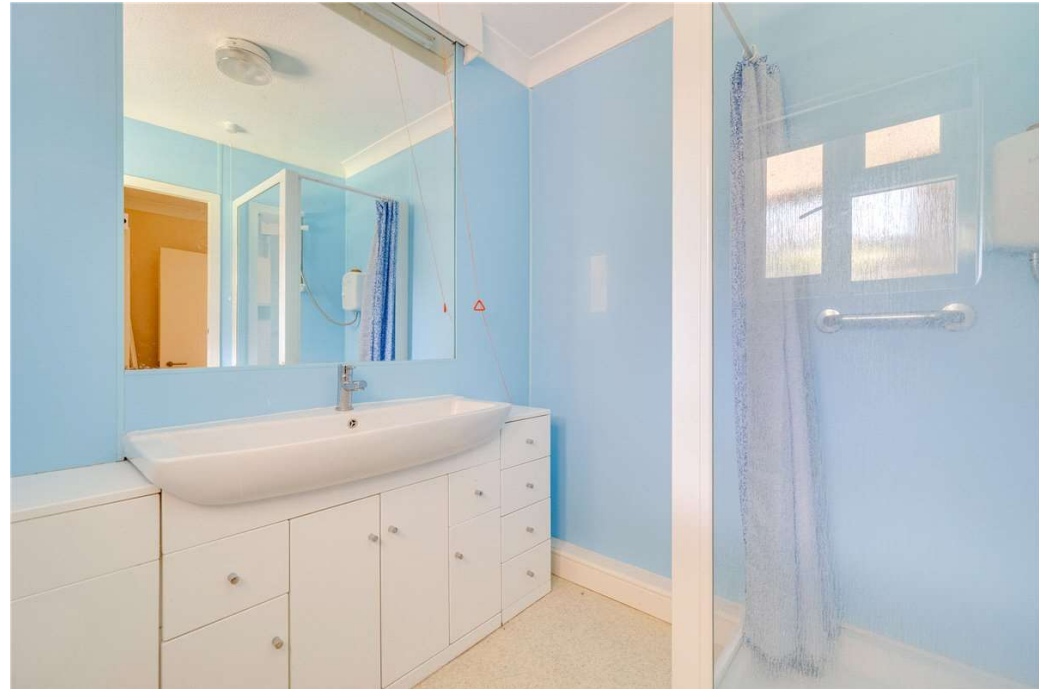
**LOCAL AUTHORITY** London Borough of Wandsworth

**EPC BAND** D

## A WELL PRESENTED ONE BEDROOM FLAT IN THIS QUIET DEVELOPMENT FOR THE OVER 55'S.



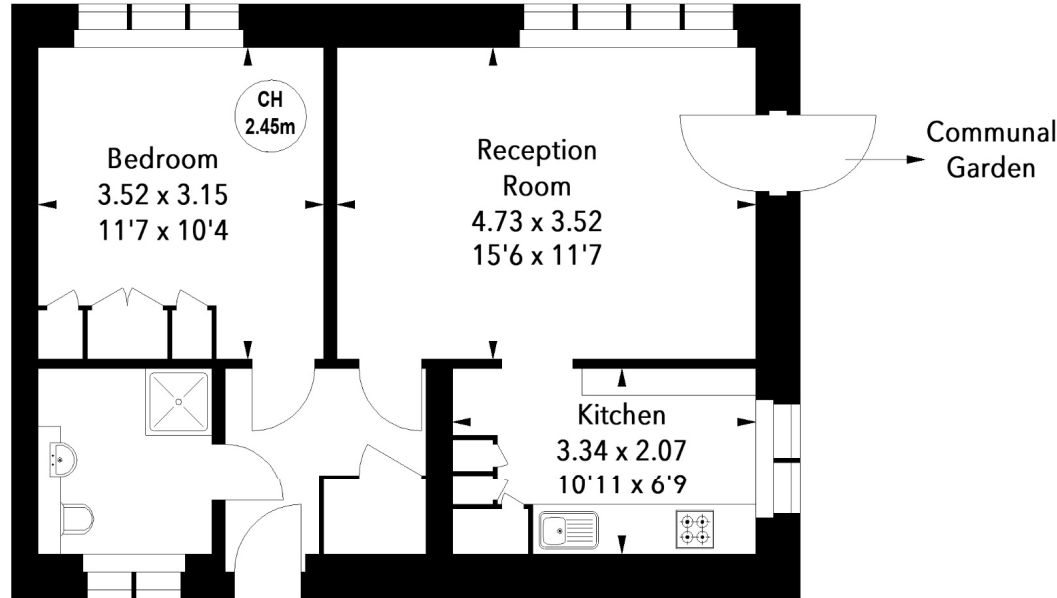




## Cedars Court , SW15

Key :  
CH - Ceiling Height

Approximate Area = 46.08 sq m / 496 sq ft



### Ground Floor

The floor plan is not to scale and measurements and areas shown are approximate and therefore should be used for illustrative purposes only. The plan has been prepared in accordance with the RICS code of Measuring Practice and whilst we have confidence in the information produced, it must not be relied on. If there is any aspect of particular importance, you should carry out or commission your own inspection of the property.

Energy Efficiency Rating		
	Current	Potential
Very energy efficient - lower running costs		
(92+) <b>A</b>		
(81-91) <b>B</b>		
(69-80) <b>C</b>		
(55-68) <b>D</b>	67	67
(39-54) <b>E</b>		
(21-38) <b>F</b>		
(1-20) <b>G</b>		
Not energy efficient - higher running costs		
England, Scotland & Wales EU Directive 2002/91/EC		

Southfields 020 7518 3260

sou.res.sales@carterjonas.co.uk  
24 Replingham Road, London, SW18 5LR

**carterjonas.co.uk**  
Offices throughout the UK

*Exclusive UK affiliate of*  
**CHRISTIE'S**  
INTERNATIONAL REAL ESTATE

#### IMPORTANT INFORMATION

These particulars are for general information purposes only and do not represent an offer or contract or part of one. Carter Jonas or anyone in their employment has made every attempt to ensure that the particulars and other information provided are as accurate as possible and they are not intended to amount to advice on which you should rely as being factually accurate. Full information which may be relevant to your decision regarding the property can be found on the property listing on [carterjonas.co.uk](http://carterjonas.co.uk) or, (including off market properties) on the brochure or a separately available material information sheet. We would advise you to confirm the details of any material information prior to any offer being submitted. You should not assume that the property has all necessary planning, building regulations or other consents and Carter Jonas has not tested any services, facilities or equipment. Any measurements and distances given are approximate only. Where Carter Jonas has been provided with a floorplan by a third party, we cannot guarantee that the floorplan has been measured in accordance with IPMS. Purchasers must satisfy themselves of all of the aforementioned by independent inspection or otherwise. Our images only represent part of the property as it appeared at the time they were taken and do not represent the furnishings included; these are confirmed in a separate inventory. If you require further information, please contact us.