



BOATHOUSE COTTAGE, STAITHES
£360,000

Carter Jonas

BOATHOUSE YARD, STAITHES, TS13 5BN

Nestled in between the High Street and the harbour, Boathouse Cottage is a beautifully modernised Grade II listed property.

Entering through Boathouse Yard, you step into the hallway with stairs leading to the first floor and a doorway to the spacious living-dining room. The space benefits from a feature fireplace following through to the rear-facing kitchen. The kitchen features modern units with built-in appliances.

The first floor includes two double bedrooms both with built-in wardrobes. The first bedroom showcases a beamed ceiling, while the second bedroom offers enchanting glimpses of the harbour from its two sash windows. The shower room is fitted with a modern white suite, including an oversize shower cubicle, a vanity wash basin, and a WC.

The second floor has been updated to host a third bedroom currently showcasing twin beds. The room is fitted with Velux windows providing ample light to the space.

Outside, the property includes a shared front yard and a larger private rear garden. The garden offers seating and an area for a BBQ. Parking is available in a nearby car park at the top of the village, or residents can apply for a parking permit from Scarborough Borough Council.

- This property is connected to mains electricity, water and drainage
- The central heating is provided by electric radiators and a log burner located downstairs
- Broadband is not connected at the property but is available
- Mobile coverage - please go to checker.ofcom.org.uk/

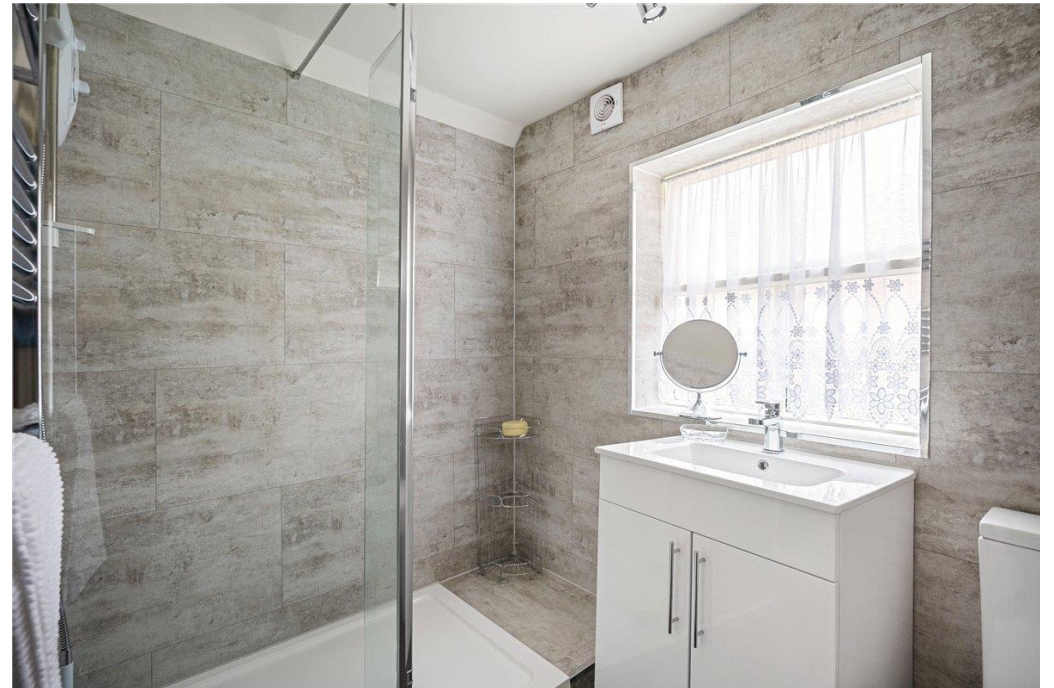
TENURE Freehold

LOCAL AUTHORITY North Yorkshire Council

EPC BAND Grade II listed

BOATHOUSE COTTAGE IS A BEAUTIFULLY MODERNISED GRADE II LISTED PROPERTY, PERFECTLY POSITIONED FOR A HOLIDAY LET INVESTMENT.

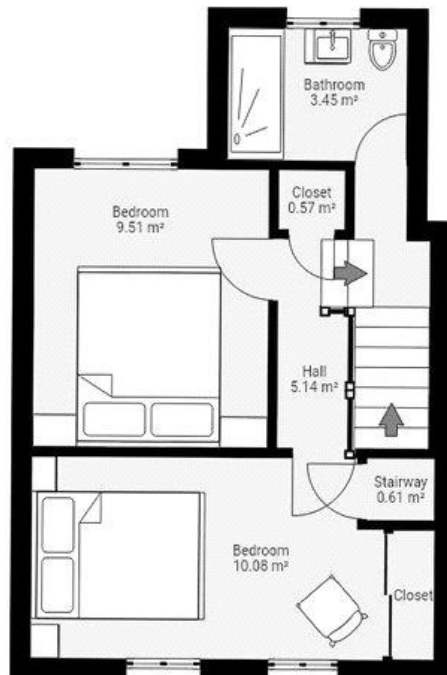
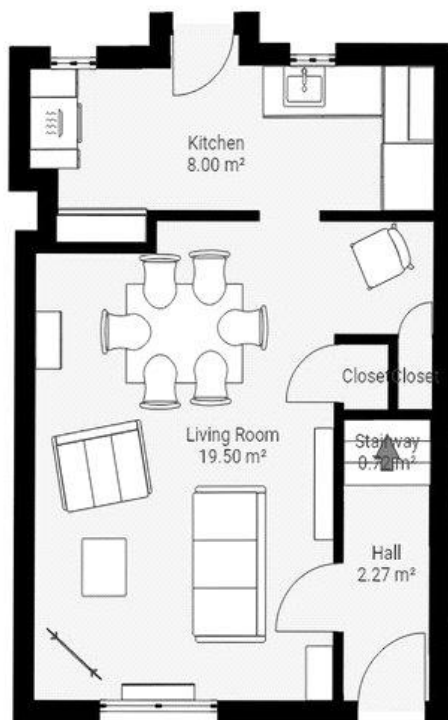




Classification L2 - Business Data



Classification L2 - Business Data



THIS FLOORPLAN IS PROVIDED WITHOUT WARRANTY OF ANY KIND. SENSOPIA DISCLAIMS ANY WARRANTY INCLUDING, WITHOUT LIMITATION, SATISFACTORY QUALITY OR ACCURACY OF DIMENSIONS.

York 01904 558200

york@carterjonas.co.uk
82 Micklegate, York, YO1 6LF

carterjonas.co.uk
Offices throughout the UK

Exclusive UK affiliate of
CHRISTIE'S
INTERNATIONAL REAL ESTATE

Classification L2 - Business Data

IMPORTANT INFORMATION

These particulars are for general information purposes only and do not represent an offer of contract or part of one. Carter-Jonas has made every attempt to ensure that the particulars and other information provided are as accurate as possible and are not intended to amount to advice on which you should rely as being factually accurate. You should not assume that the property has all necessary planning, building regulations or other consents and Carter Jonas have not tested any services, facilities or equipment. Any measurements and distances given are approximate only. Purchasers must satisfy themselves of all of the aforementioned by independent inspection or otherwise. Although we make reasonable efforts to update our information, neither Carter Jonas LLP nor anyone in its employment or acting on its behalf makes any representations warranties or guarantees, whether express or implied, in relation to the property, or that the content in these particulars is accurate, complete or up to date. Our images only represent part of the property as it appeared at the time they were taken. If you require further information please contact us.